

FULHAM REACH
LONDON W6

HOLLAND COURT

Apartment 514 | 2 BEDROOM
Asking Price £1,090,000
Anticipated Completion: July – August

Apartment Details



Ready to Move In



Beautiful views overlooking the colourful scenery of Frank Banfield Park



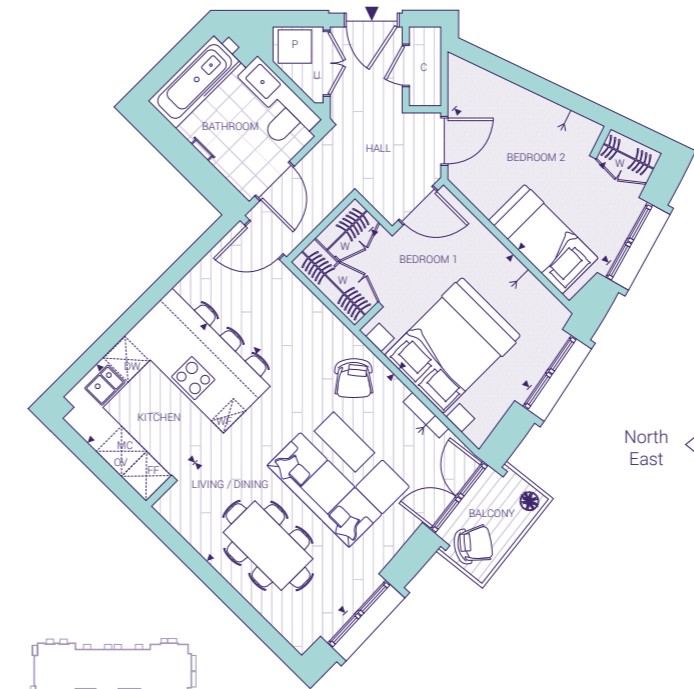
Highest yielding home



Contemporary home at our starting price

FIRST FLOOR

TOTAL AREA	69.7 SQM	750.2 SQFT
Kitchen	2.51m x 3.07m	8' 3" x 10' 1"
Living / Dining	3.87m x 4.81m	12' 8" x 15' 9"
Bedroom 1	4.06m x 2.96m	13' 4" x 9' 9"
Bedroom 2	3.95m x 2.29m	13' 0" x 7' 6"
Balcony	2.2 sqm	23.7 sqft



KEY

▶ Measurement Points ◀ TV Aerial Point W Wardrobe C Cupboard U Utility Cupboard
FF Fridge/Freezer MC Microwave WF Wine Fridge DW Dishwasher OV Oven
P Heat Interface Unit & MVHR with Washer/Dryer below PS Privacy Screen

Development Information

COUNCIL TAX

Band H £2,612.00

TENURE*

999 years lease from 2011

SERVICE CHARGES**

Holland Court: Estimated £5.89 psf per annum

ESTIMATED WEEKLY RENT***

£730

TERMS OF PAYMENT

When expected completion is within 6 months

1. £10,000 reservation fee
2. Exchange within 21 days on 20% of the purchase price, minus reservation fee already paid
3. Balance is payable on completion

Fulham Reach Sales & Marketing Suite
Distillery Wharf, Parr's Way, W6 9GD

CLICK HERE
TO BOOK YOUR APPOINTMENT
TODAY or call 020 7870 9500

