



FULHAM REACH
LONDON W6

HOLLAND HOUSE

Apartment 598 | 2 BEDROOM
Asking Price £1,245,000
Anticipated Completion: July – August

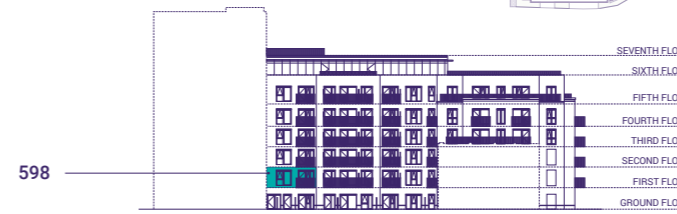
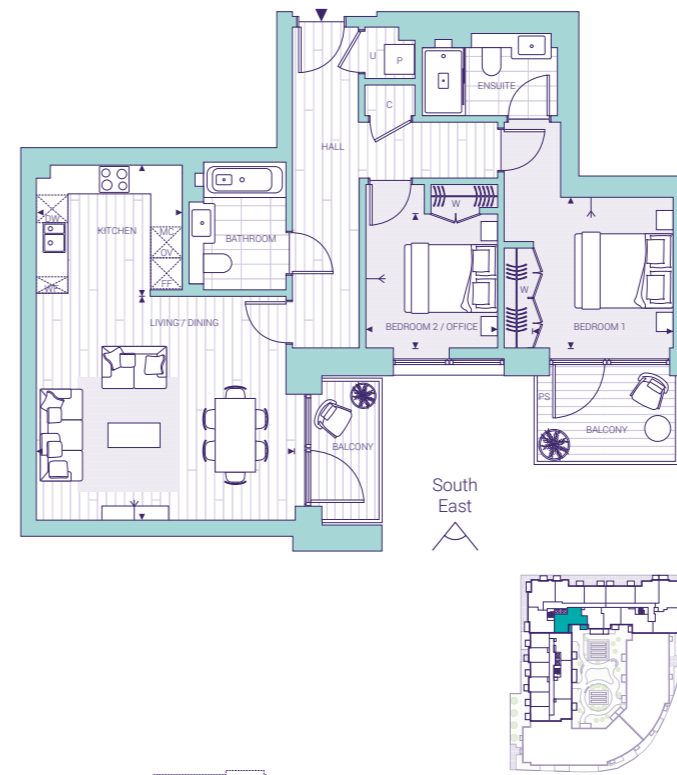


Apartment Details

- 
Ready to Move In
- 
Tranquil views overlooking exclusive resident's garden.
- 
Highest yielding home
- 
Contemporary home at our starting price
- 
Two balconies

FIRST FLOOR

TOTAL AREA	80.3 SQM	864.3 SQFT
Kitchen	2.98m x 2.66m	9' 9" x 8' 9"
Living/Dining	5.23m x 4.56m	17' 2" x 15' 0"
Bedroom 1	2.85m x 3.08m	9' 4" x 10' 1"
Bedroom 2/Office	2.71m x 2.74m	8' 11" x 9' 0"
Balcony Areas	9.4 sqm	101.2 sqft



KEY
 ▶ Measurement Points ◀ TV Aerial Point W Wardrobe C Cupboard U Utility Cupboard
 FF Fridge/Freezer MC Microwave WF Wine Fridge DW Dishwasher OV Oven
 P Heat Interface Unit & MVHR with Washer/Dryer below PS Privacy Screen

Development Information

COUNCIL TAX
Band H £2,612.00

TENURE*
999 years lease from 2011

SERVICE CHARGES**
Holland House: Estimated £5.41 psf per annum

ESTIMATED WEEKLY RENT***
£775

- TERMS OF PAYMENT**
When expected completion is within 6 months
1. £10,000 reservation fee
 2. Exchange within 21 days on 20% of the purchase price, minus reservation fee already paid
 3. Balance is payable on completion

Fulham Reach Sales & Marketing Suite
Distillery Wharf, Parr's Way, W6 9GD

[CLICK HERE TO BOOK YOUR APPOINTMENT TODAY or call 020 7870 9500](#)

Disclaimer: Please be aware that these details are intended to give a general indication of properties available and should be used as a guide only. The company reserves the right to alter these details at any time. The contents herein shall not form any part of any contract or be a representation including such contract. These properties are offered subject to availability. Applicants are advised to contact the sales office or the appointed agents to ascertain the availability of any particular type of property so as to avoid a fruitless journey. The property areas are provided as gross internal areas under the RICS measuring practice 4th edition recommendation. *The ground rent premium is as per the ground rent schedule in the legal pack and will increase in accordance with RPI every 21 years. **Anticipated service charge is an estimate only and subject to change. The estimate is dated 2019 and does not make allowances for increases due to RPI, inflation etc. from the date of preparation to legal completion. Terms of charge that can affect the service charge include, but are not limited to, changes in industry or government legislation, unexpected cost and any other matter outside of the control of St George. The appointed Managing Agent may also charge additional fees, outside of the service charge, for items including, but not limited to, licences and consents, sub-letting, legal proceedings and re-selling / sales pack. ***Current market value as of 20/07/2023. Prices are correct at time of going to print. Computer generated images are indicative only.



HOLLAND HOUSE