



# THAMES CITY

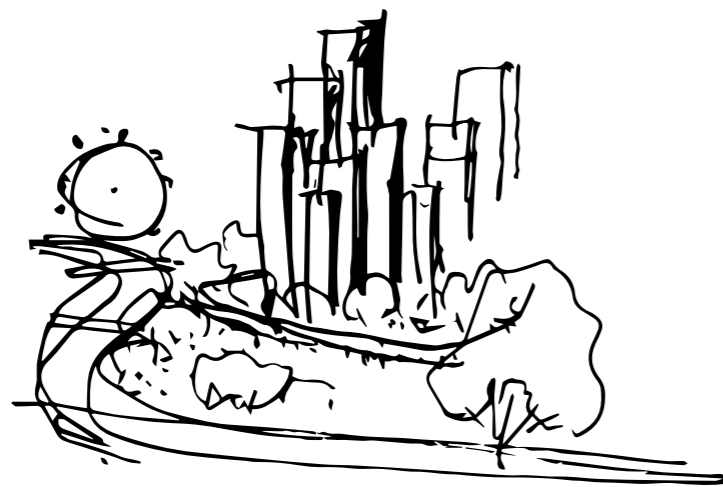
LONDON SW8



# THAMES CITY

LONDON SW8

On the former northern site  
of the New Covent Garden  
Flower Market and overlooking  
London's iconic River Thames,  
a new city is taking shape.



## Come and discover

INTRODUCTION	2
PERFECTLY POSITIONED	10
<b>CHAPTER ONE – THE LOCATION</b>	13
SECRET LONDON	15
GETTING AROUND	28
EDUCATION	32
<b>CHAPTER TWO – THAMES CITY</b>	35
NINE ELMS	36
LINEAR PARK	38
THE DEVELOPMENT	40
ARRIVAL	42
<b>CHAPTER THREE – GREEN SPACES</b>	51
HIDDEN GARDENS	55
THE PODIUM	56
<b>CHAPTER FOUR – THE AMENITIES</b>	59
AMENITIES PLAN	60
WELLBEING CREATED BY NATURE	63
LOUNGE 39	78
<b>CHAPTER FIVE – THE APARTMENTS</b>	81
SPIRITUALITY IN DESIGN	85
SPECIFICATION	99

## THE ULTIMATE INVITATION

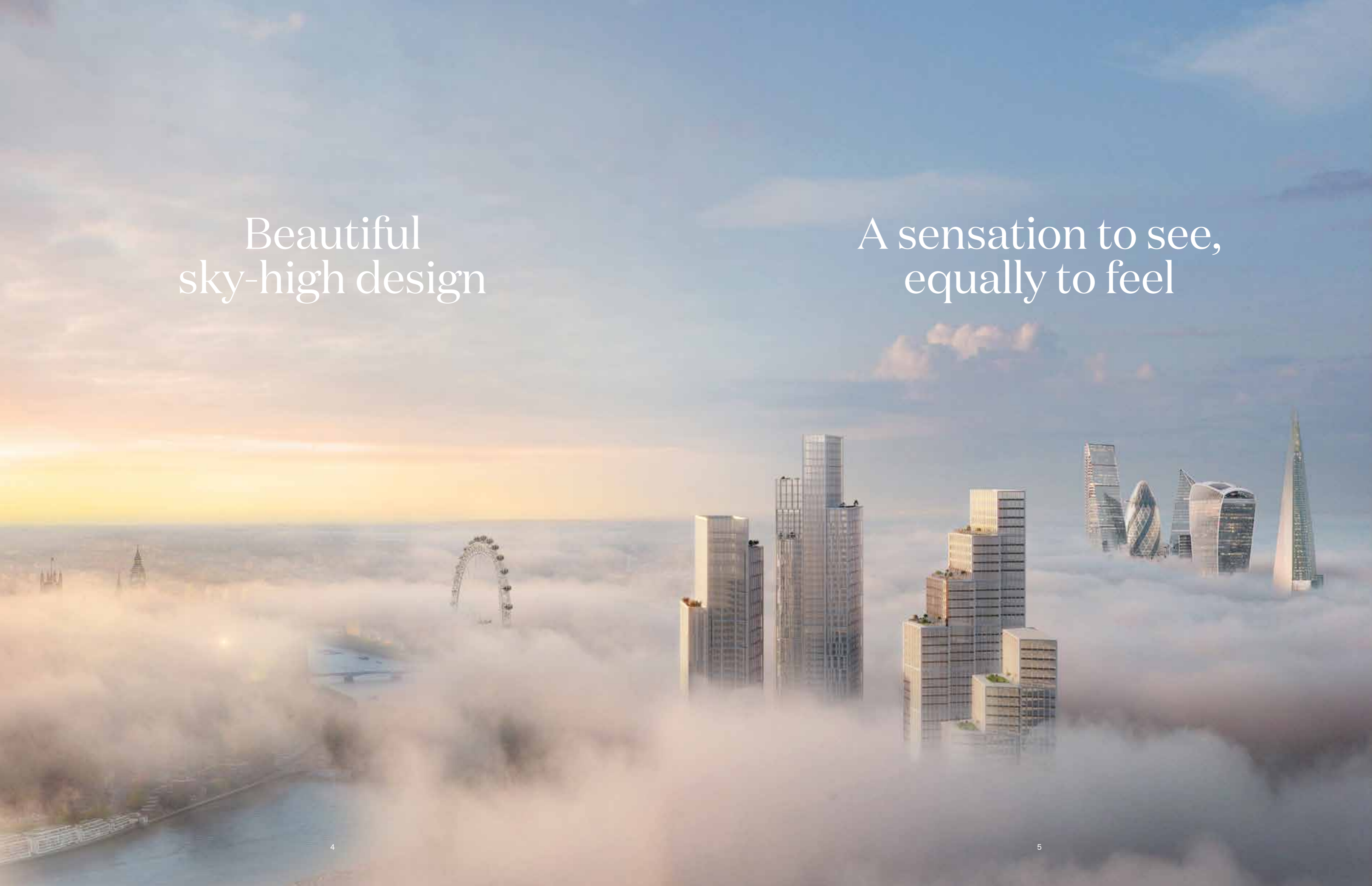


Step inside this fresh district of London with three residential towers at its helm that's set to become the new favourite landmark on the London skyline. A significant development of 12 buildings in total, Thames City offers beautiful apartments and private luxury amenities, high-end retail and exquisite dining experiences. All life interconnects through a network of lush parks, intimate green courtyards and enchanting city squares. This luxury development is the ultimate combination of inventive contemporary living in a historic London location within the greenest of green surroundings.



Beautiful  
sky-high design

A sensation to see,  
equally to feel



BUCKINGHAM PALACE

MAYFAIR

US EMBASSY

ST JAMES'S PARK

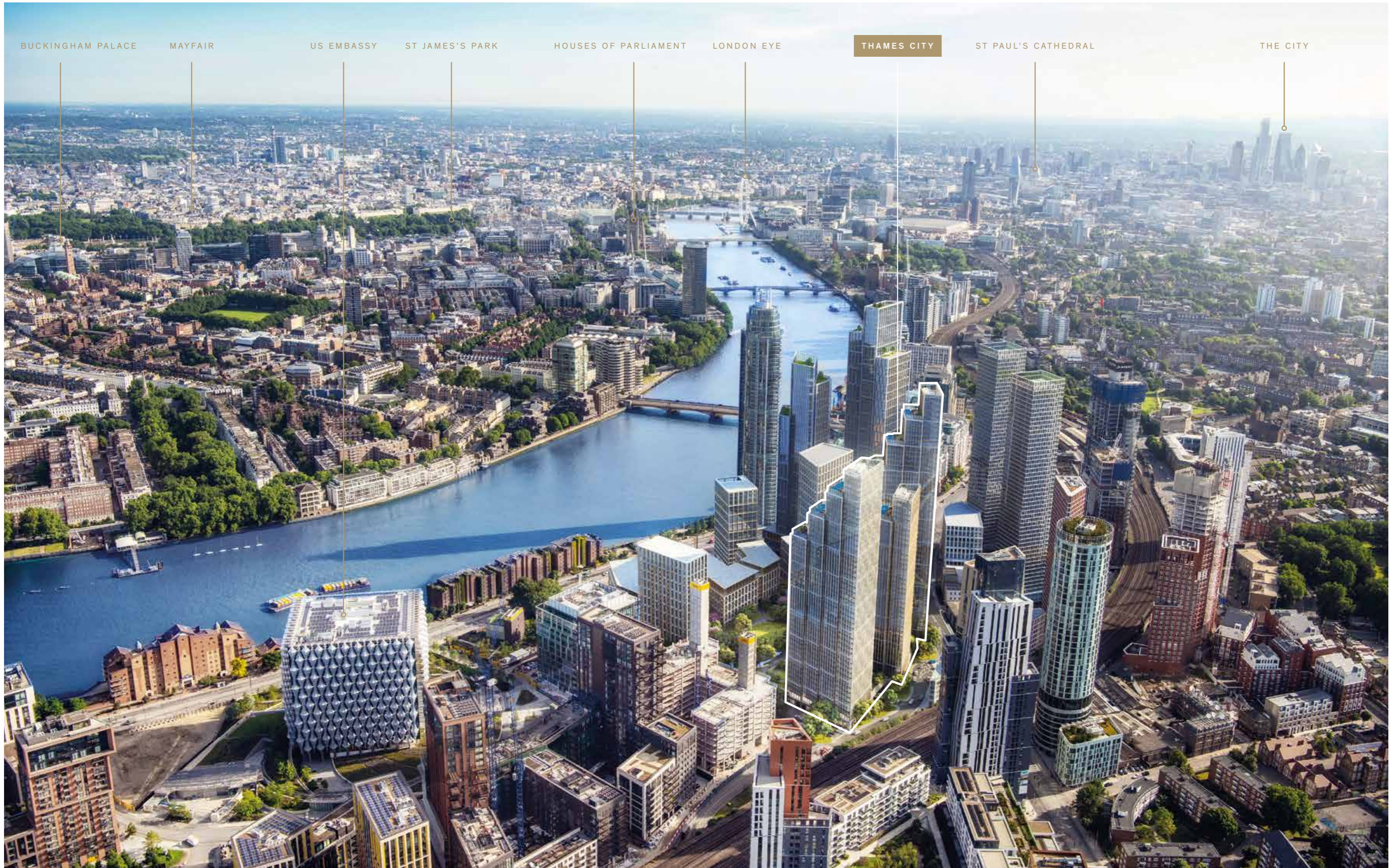
HOUSES OF PARLIAMENT

LONDON EYE

THAMES CITY

ST PAUL'S CATHEDRAL

THE CITY



THAMES CITY

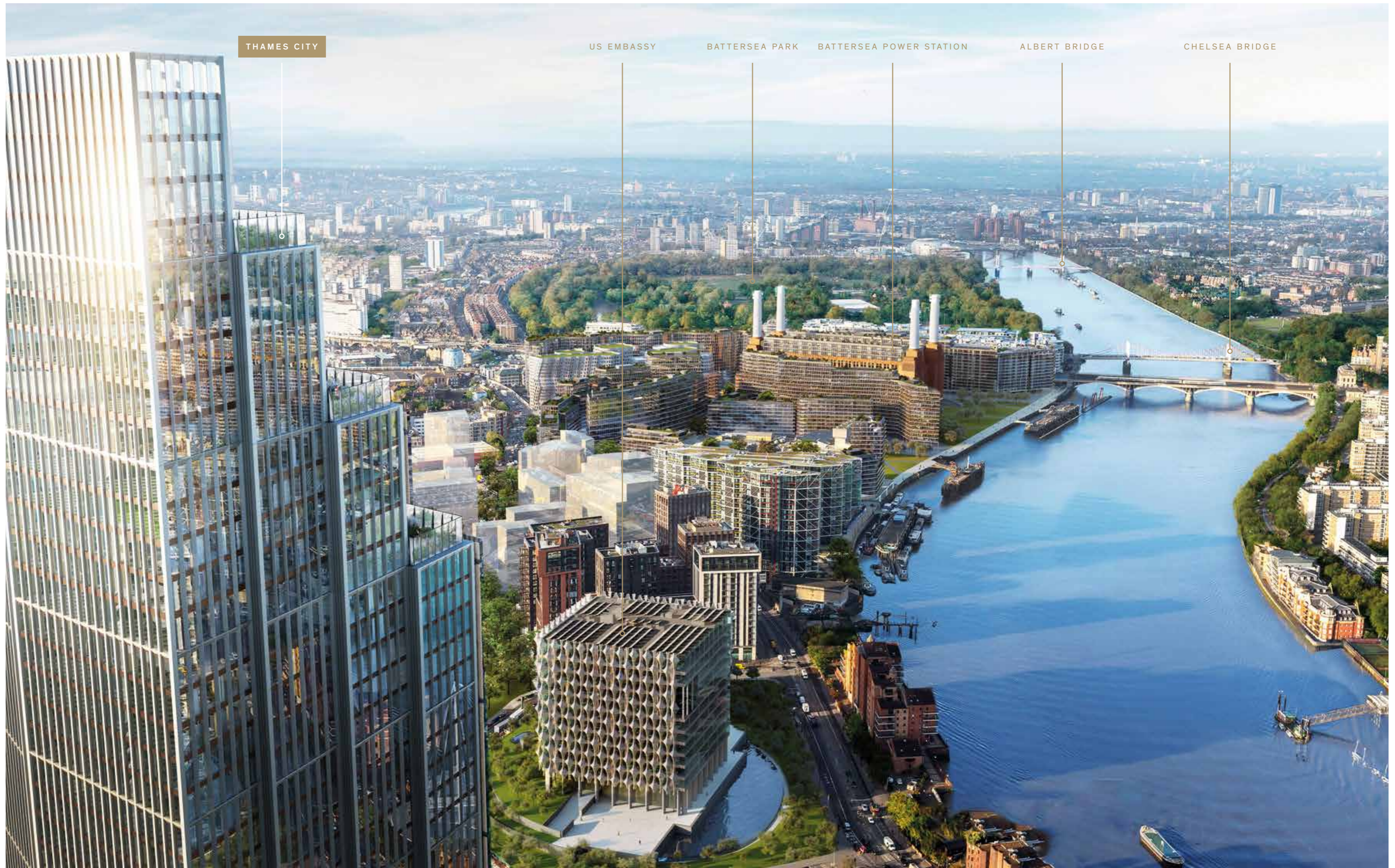
US EMBASSY

BATTERSEA PARK

BATTERSEA POWER STATION

ALBERT BRIDGE

CHELSEA BRIDGE



LOCATION HIGHLIGHTS

- 1 NEW COVENT GARDEN MARKET
- 2 US EMBASSY
- 3 NINE ELMS SUNDAY MARKET
- 4 DELICIAS DELI
- 5 MEGAN'S RESTAURANT
- 6 BATTERSEA POWER STATION PIER
- 7 PEAR TREE CAFE
- 8 THE LONDON PEACE PAGODA
- 9 THE PRINCE ALBERT PUB
- 10 ROYAL COLLEGE OF ART BATTERSEA
- 11 AUGUSTINE KITCHEN
- 12 THE LIGHTHOUSE BATTERSEA PUB
- 13 CHELSEA EMBANKMENT
- 14 CHELSEA PHYSIC GARDEN
- 15 RESTAURANT GORDON RAMSAY
- 16 GORDON RAMSAY BAR & GRILL
- 17 ROYAL HOSPITAL CHELSEA
- 18 KING'S ROAD SHOPPING
- 19 STICKS 'N' SUSHI
- 20 NO.11 PIMLICO ROAD BAR & RESTAURANT
- 21 LA POULE AU POT RESTAURANT
- 22 COLBERT RESTAURANT
- 23 BRUNSWICK HOUSE BAR & RESTAURANT
- 24 VINE BAR
- 25 ITALO DELI
- 26 GASWORKS GALLERY
- 27 NEWPORT STREET GALLERY
- 28 GARDEN MUSEUM
- 29 SLOANE STREET SHOPPING
- 30 HARVEY NICHOLS KNIGHTSBRIDGE
- 31 VICTORIA & ALBERT MUSEUM
- 32 IMPERIAL COLLEGE LONDON
- 33 HARD ROCK CAFE
- 34 THE DORCHESTER HOTEL
- 35 THE RITZ HOTEL
- 36 TRAFALGAR SQUARE
- 37 SHAFTESBURY AVENUE
- 38 CLARIDGE'S HOTEL
- 39 ROYAL LANCASTER LONDON HOTEL
- 40 THE DESIGN MUSEUM



PERFECTLY POSITIONED.





A DESTINATION TO GATHER WITH FRIENDS, FIND JOY, FEEL INVIGORATED AND RELAX. A PLACE TO CALL HOME AND STEPPING STONE TO THE VERY BEST OF LONDON, NEW TO THE RIVER.

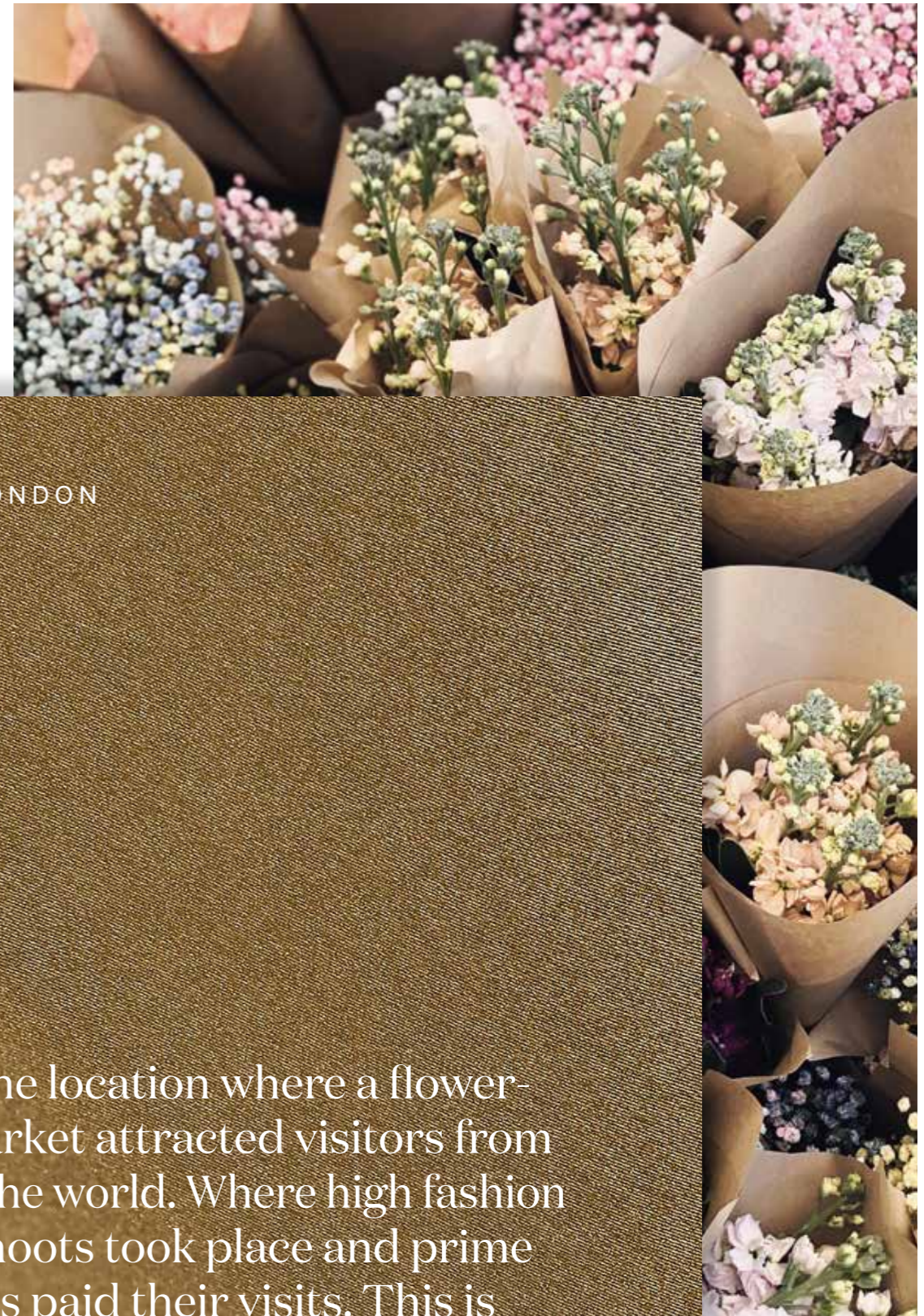
# Discover a floral history

CHAPTER ONE



THE LOCATION

## Revel in London past and present



SECRET LONDON

This is the location where a flower-filled market attracted visitors from all over the world. Where high fashion photo shoots took place and prime ministers paid their visits. This is the place where incredible plants and flowers were chosen to mark the seasons and to adorn many special occasions throughout the year.



It's no secret that London is one of the greatest cities in the world, loved for its street life, night life and finer things in life, made with equal part tradition and remarkable innovation. Your Thames City apartment is in the midst of it all. A place where you can enjoy direct views over the West End and City of London, that lets you take an easy stroll over the river, to the very best of international culture, entertainment, concert halls, retail and the Westminster hub.

Secret London is the place that's always best discovered on foot. Start your journey from the beautiful Great Lawn, the luscious central arena of Thames City, and wend your way through the green pathways and squares, to the river and beyond. Find cobbled streets with intimate restaurants, fine traditional pubs with many a story to tell, and world-class street performers bringing fables to the streets.



Step across Chelsea Bridge  
for the pretty streets,  
boutique shops and world  
class dining experiences  
this special part of London  
has to offer.



ON YOUR DOORSTEP

1



2



3

- 1 Battersea Park
- 2 Battersea Power Station Pier
- 3 Circus West Village

REVEL IN YOUR RIVER VIEW EVERY DAY, AS THE SUN RISES AND THE CITY AWAKES.

ON YOUR DOORSTEP

5



6



- 5 Pear Tree Cafe
- 6 Battersea Park
- 7 Duck Pond



7

NEVER HAS A NEW LONDON RESIDENCE BEEN SURROUNDED BY SO MUCH GREEN.

8



9



10



11

- 8 The Serpentine
- 9 Westminster
- 10 Victoria and Albert Museum
- 11 Royal Hospital, Chelsea

THAMES CITY HAS UNCOMPARABLE ACCESS TO THE RIVER THAMES AND LONDON'S WORLD RENOWNED LANDMARKS.

12



13



- 12 Saatchi Gallery
- 13 London Eye
- 14 Buckingham Palace
- 15 Royal Albert Hall



14



15

INCREDIBLE HISTORY, ENTERTAINMENT AND INGENUITY FILL EVERY INCH OF YOUR SURROUNDINGS.



Southbank Centre



WHETHER YOU'RE STAYING IN THAMES CITY OR EXPLORING FURTHER AFIELD YOU'LL FIND EXCLUSIVE PLACES TO RELAX AND SPEND TIME IN.

16



17



18

- 16 Brunswick House
- 17 Brunswick House
- 18 Restaurant Gordon Ramsay

AS DAY BECOMES NIGHT, INDULGE IN THE INCREDIBLE RANGE OF CULINARY EXPERIENCES YOU HAVE ON YOUR DOORSTEP.



SHOPPING

19



- 19 Harvey Nichols
- 20 Bulgari, Sloane Street
- 21 Burberry, Brompton Road
- 22 Harrods
- 23 Chanel, Sloane Street

20



21



22

KNIGHTSBRIDGE AND ITS LUXURY RETAIL OFFERING IS JUST THE OTHER SIDE OF BATTERSEA PARK.

SHOPPING

23



ENJOY EXCLUSIVE FLAGSHIP STORES ON SLOANE STREET AND NEW BOND STREET.

MULTIPLE TRANSPORT OPTIONS

With Nine Elms tube station and Vauxhall tube and mainline station less than a ten minute walk away, getting around London from Thames City couldn't be simpler. You also have the enjoyable option of using the Thames Clipper service, whether to cruise up and down the river in your leisure time or to travel to your place of work each day.



THE RIVER THAMES IS MUCH MORE THAN A VIEW – TRAVEL TO YOUR DESTINATION BY BOAT EACH DAY

London and international travel is easy with multiple transport links on your doorstep and popular destinations accessible by foot.

BY TAXI



BY TUBE & RAIL



TO AIRPORTS

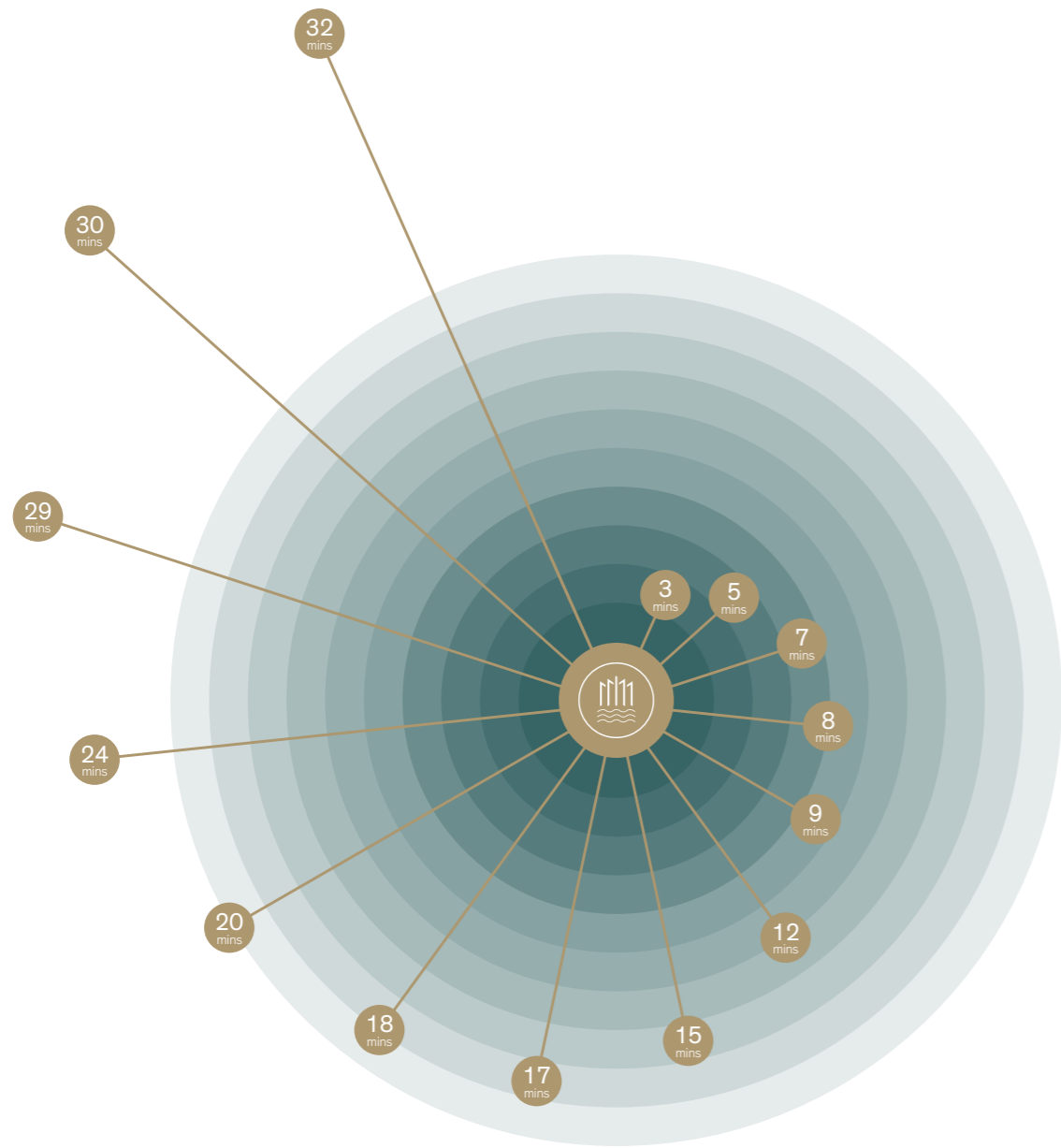


BY RIVER BOAT

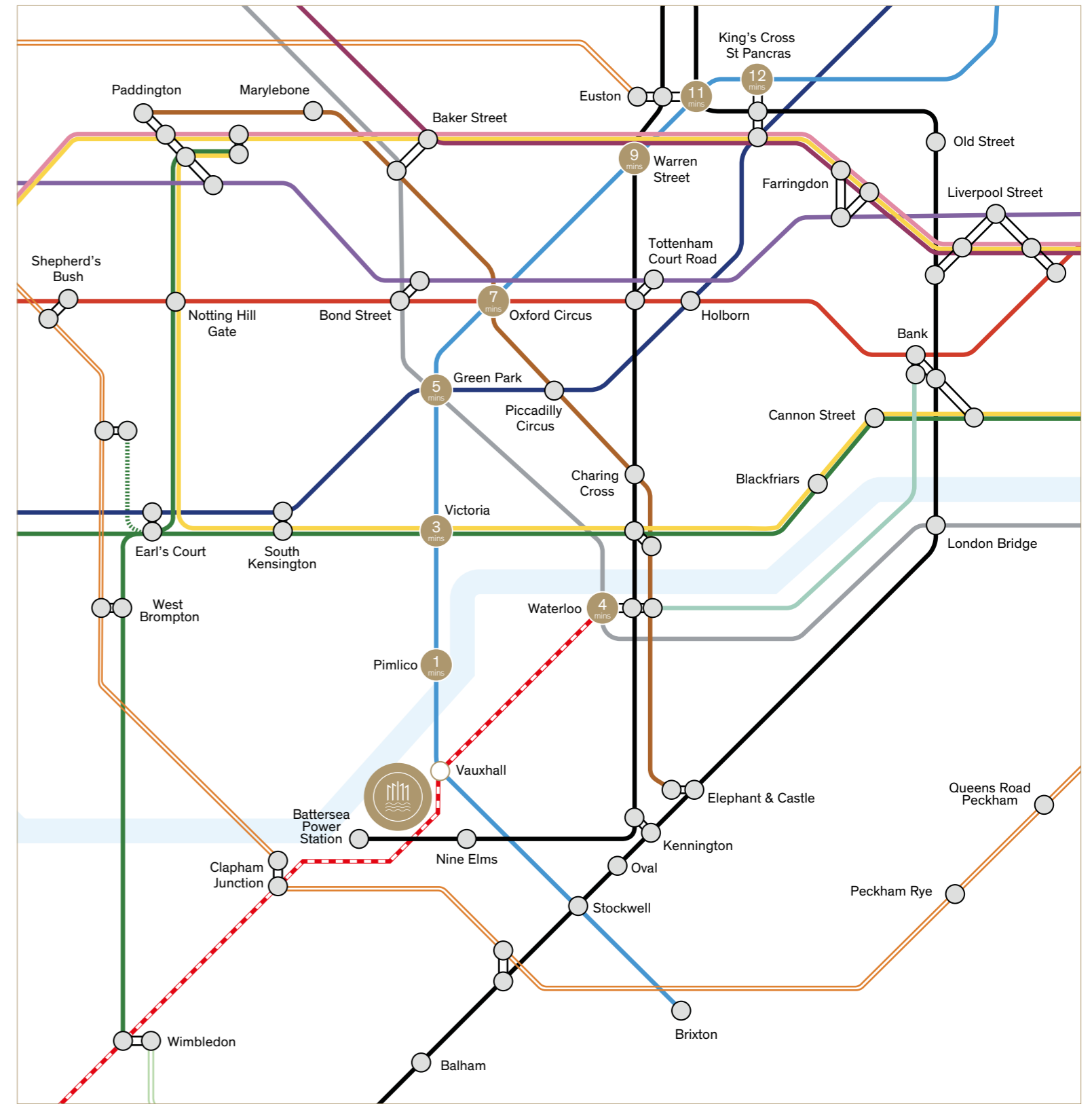


WALK AND CYCLE

TUBE CONNECTIONS



- 3 mins** RIVERSIDE WALK (Walk)
- 5 mins** ST GEORGE WHARF PIER (Walk)
- 7 mins** BRUNSWICK HOUSE (Walk)
- 8 mins** NINE ELMS STATION (Walk), NEW COVENT GARDEN MARKET (Walk)
- 9 mins** VAUXHALL STATION (Walk)
- 12 mins** VAUXHALL PARK (Walk), SLOANE SQUARE (Cycle), BOND STREET (Cycle)
- 15 mins** VAUXHALL MARKET (Walk)
- 17 mins** TATE BRITAIN (Walk), GREEN PARK (Cycle)
- 18 mins** PIMLICO STATION (Walk), THE SHARD (Cycle)
- 20 mins** THE OVAL (Walk), BUCKINGHAM PALACE (Cycle)
- 24 mins** BATTERSEA PARK (Walk)
- 29 mins** VICTORIA (Walk), KING'S CROSS ST PANCRAS (Cycle)
- 30 mins** WESTMINSTER ABBEY (Walk)
- 32 mins** LONDON EYE (Walk)



- Bakerloo**
- Central**
- Circle**
- District**
- Hammersmith & City**
- Jubilee**
- Metropolitan**
- Northern**
- Piccadilly**
- Victoria**
- Waterloo & City**
- Elizabeth**
- London Overground**
- South Western Railway**
- River Thames**

A location with excellent primary, secondary and further education opportunities, enabling every age to enjoy discovery and learning in London.

World class universities are in abundance in London, with students benefitting from teaching talent from all over the world and every subject imaginable being taught. Together the universities help to shape the culture and growth of this great capital city, inspire learning and careers, and contribute to business, science and innovation.

High quality education is available for every age group, beginning with The Battersea Nursery Pre-School and continuing to Lambeth College and International Cambridge College.

The London School of Economics and Political Science



University College London (UCL)



King's College London

**Top 10 Universities in London**

- 1 Imperial College London
- 2 University College London (UCL)
- 3 King's College London
- 4 The London School of Economics and Political Science (LSE)
- 5 Queen Mary University of London
- 6 City, University of London
- 7 Birkbeck, University of London
- 8 Royal Holloway University of London
- 9 Brunel University London
- 10 SOAS University of London

According to the QS World University Rankings 2022



# A new flowering city

CHAPTER TWO



THAMES CITY

## Unparalleled style and sophistication

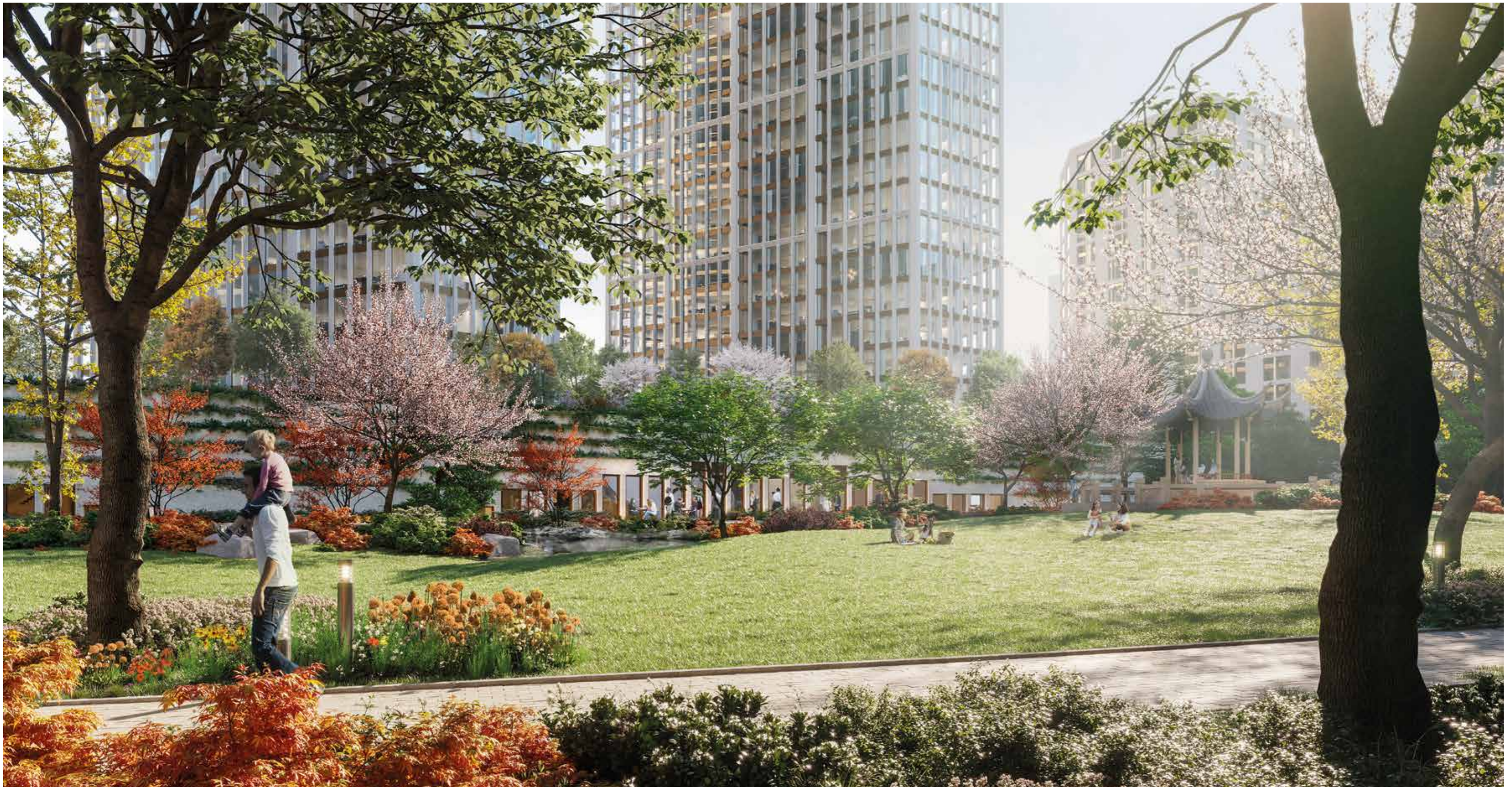
The old industrial sites in Nine Elms are being completely transformed. The historic Vauxhall Cross and Albert Embankment are being redesigned into an attractive, pedestrian-friendly destination.

NINE ELMS

Nine Elms is the most ambitious regeneration project undertaken in London for decades. Taking advantage of its prime central and riverside location, it will completely transform the area, introducing new transport links and public spaces to create a vibrant destination for city dwellers and visitors.

- 1 THE NEW COVENT GARDEN MARKET
- 2 THE RIVER WALKWAY
- 3 US EMBASSY
- 4 LINEAR PARK
- 5 FORTHCOMING R&F DEVELOPMENT
- 6 FORTHCOMING R&F DEVELOPMENT
- 7 VAUXHALL PARK
- 8 ST GEORGE WHARF PIER
- 9 MI6
- 10 PLEASURE GARDENS





#### LINEAR PARK

Linear Park is a brand new London park that provides a green walk from Vauxhall Bridge to Battersea Power Station. Publicly accessible it encompasses charming play areas, sculptured seating and hundreds of new trees.



SITE PLAN

- 1 PARK HYATT HOTEL
- 2 THAMES CITY PHASE 1
- 3 THAMES CITY PHASE 2
- 4 FORTHCOMING R&F DEVELOPMENT





Arriving at your home in Thames City is an experience equal to entering the world's most luxurious and exclusive hotels.





YOUR EVERY NEED CAN BE TENDED TO WITH A CONCIERGE  
TEAM AVAILABLE TO SERVE 24 HOURS A DAY.



THE IMPRESSIVE STRUCTURE OF WEST COURTYARD  
IS A FOCAL POINT WITHIN THAMES CITY.

## EAST COURTYARD

Natural light floods into the East Courtyard entrance hall through its expansive glass dome roof and golden slatted frame. Beautiful planting inside is a continuum of the landscaped gardens outside. This is a temperature controlled, airy environment that delivers a positive welcome all year round.





YOUR WELL-BEING IS FULLY SUPPORTED WITH SURROUNDINGS THAT  
WRAP YOU IN THE BEAUTIFUL SIGHTS, SOUNDS AND SCENTS OF NATURE.  
EVERY DETAIL OF THE LANDSCAPING HAS BEEN CREATED TO OFFER JOY.

# The scents of nature

CHAPTER THREE

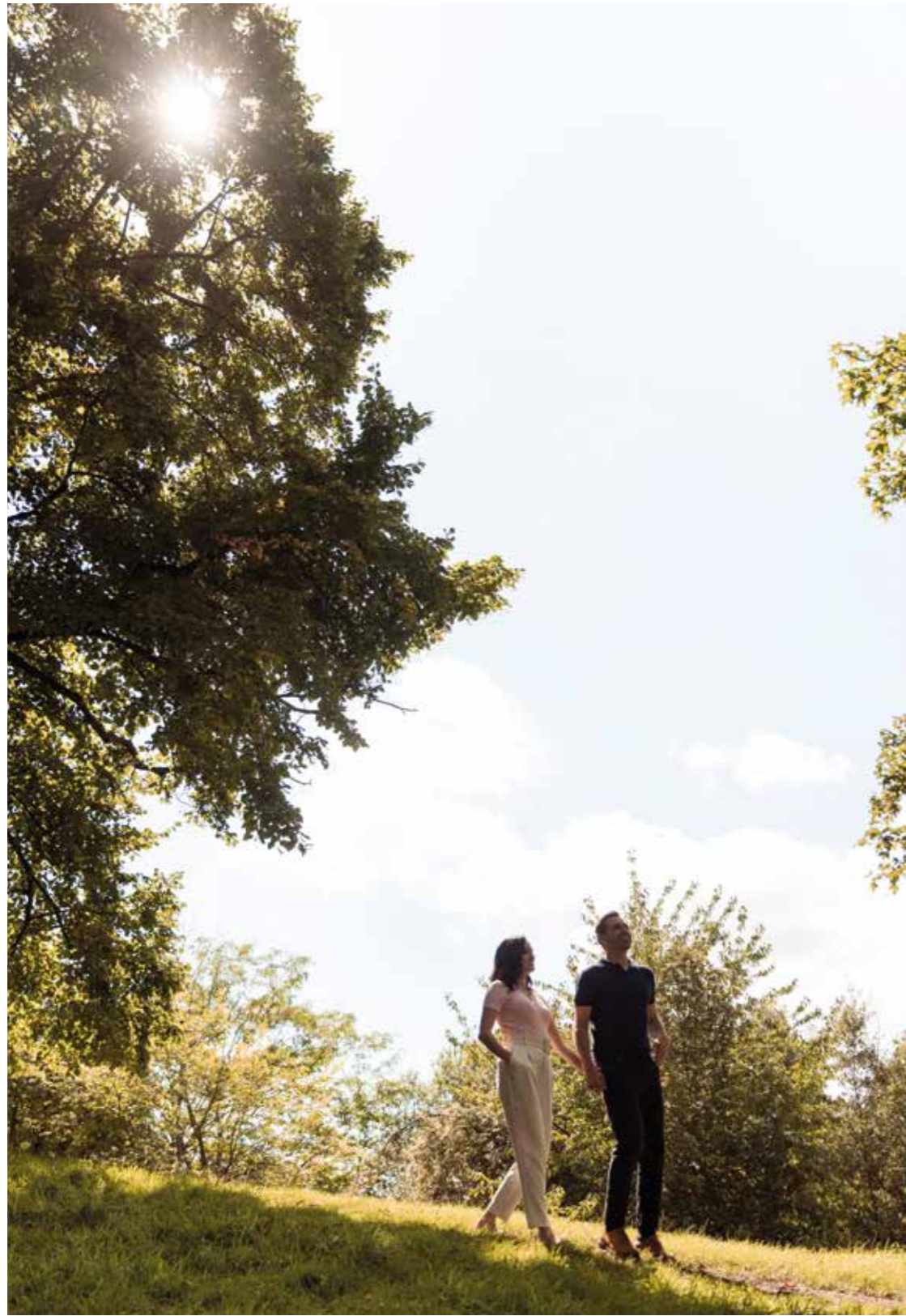


GREEN SPACES

## Pleasure for every season



The Podium is an exclusive garden at Thames City overlooking Linear Park and sitting above the main arrival area on building No.8. Beautiful oriental planting and discretely placed seating create a delightful setting to relax and enjoy the low level views across the Thames.



# Hidden

FIND YOUR WAY AROUND THE MEANDERING  
PLANT ADORNED PATHWAYS, COURTYARDS  
AND SUMPTUOUS CITY SQUARES.

# Gardens

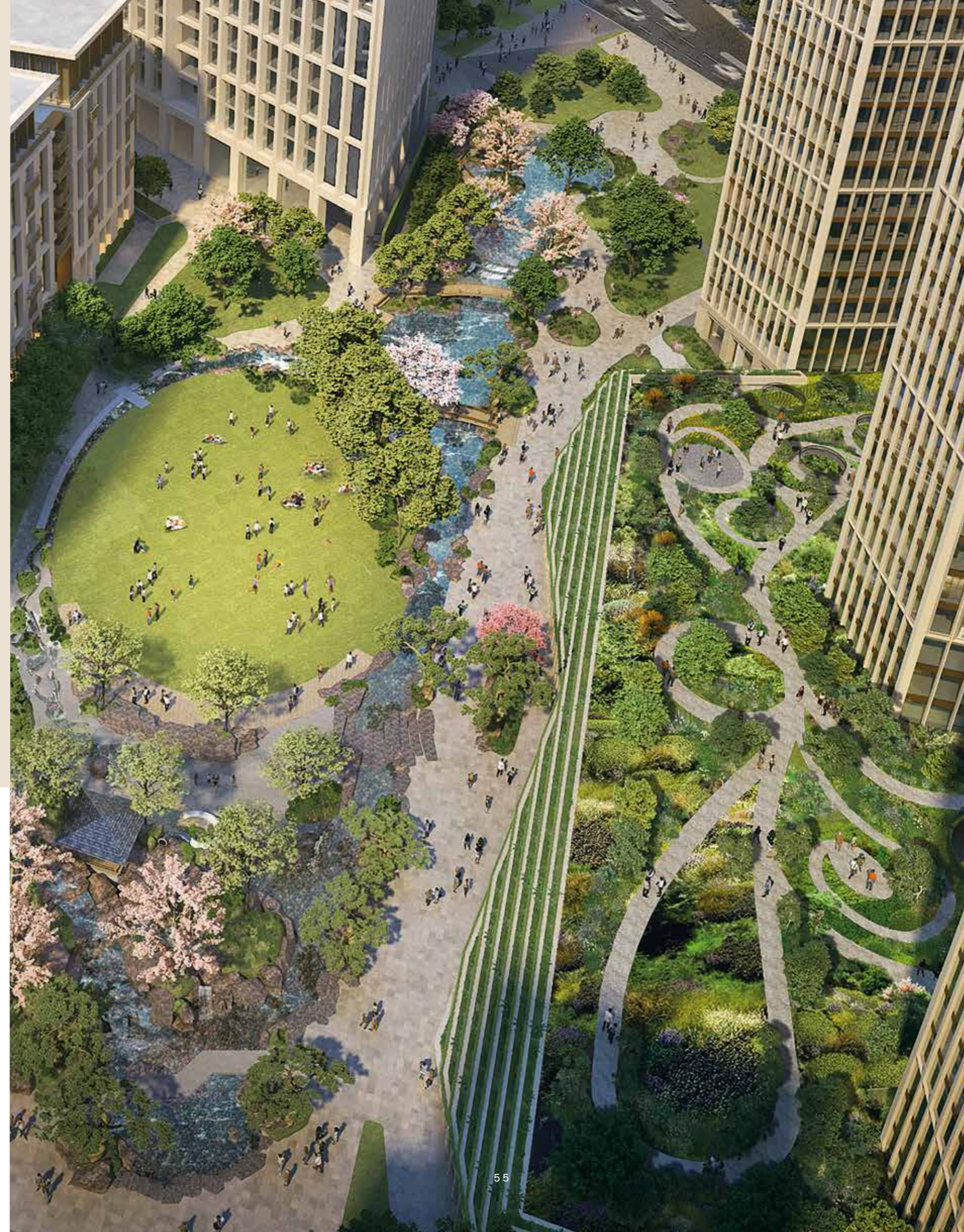


Lush planting, intricate interconnecting gardens and a mass of mature trees are signature features of Thames City, making it a heavenly place to be.

Careful consideration has been given to the scents, colours and striking appearance of green spaces all year round and you can follow the planted pathways from Thames City to London's new Linear Park. This reaches from Battersea Power Station in the west along the river to Thames City and Vauxhall, taking in existing green spaces, public squares, shopping parades, hotels, parks and gardens.

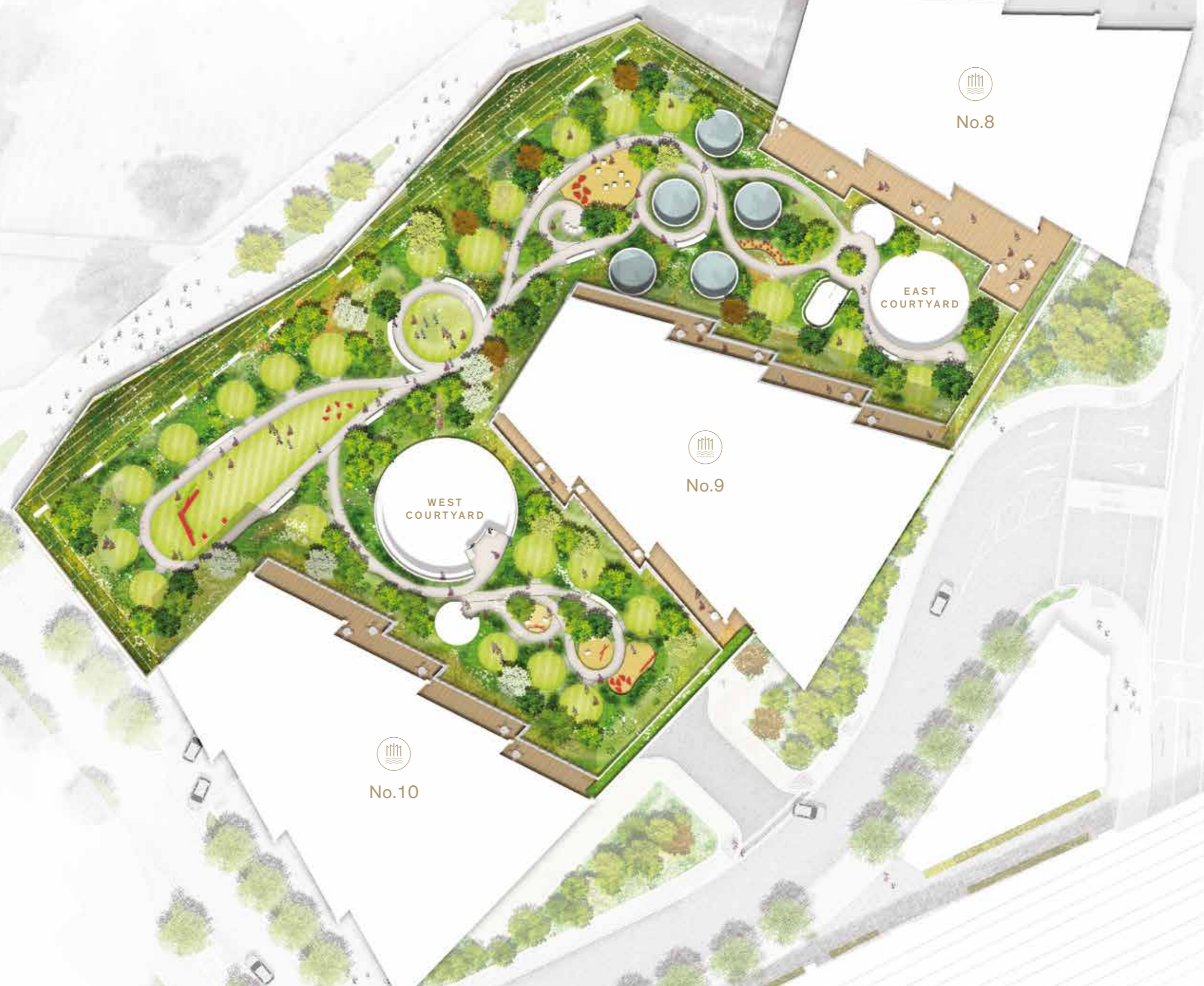
A standout feature of Thames City is its private podium courtyard for residents, containing over 20 gardens in flowing circular designs that lead you to beautiful stopping off points and places to gather with family and friends.

Communal space for residents is mixed with private space and play areas, ensuring residents of Thames City always have a green, genteel and welcoming place to be.





PODIUM LEVEL



The Podium provides a calm and secluded retreat for the residents at Thames City.

Unprecedented luxury  
on another level



1974 Club

TAKING ITS NAME FROM THE YEAR THE ORIGINAL COVENT GARDEN FLOWER MARKET  
OPENED ON THE THAMES CITY SITE, THE 1974 CLUB IS YOUR ENTRY POINT TO  
ULTRA LUXURY AMENITIES, STYLISH SOCIAL SPACES AND RESIDENTS' SERVICES.

CHAPTER FOUR

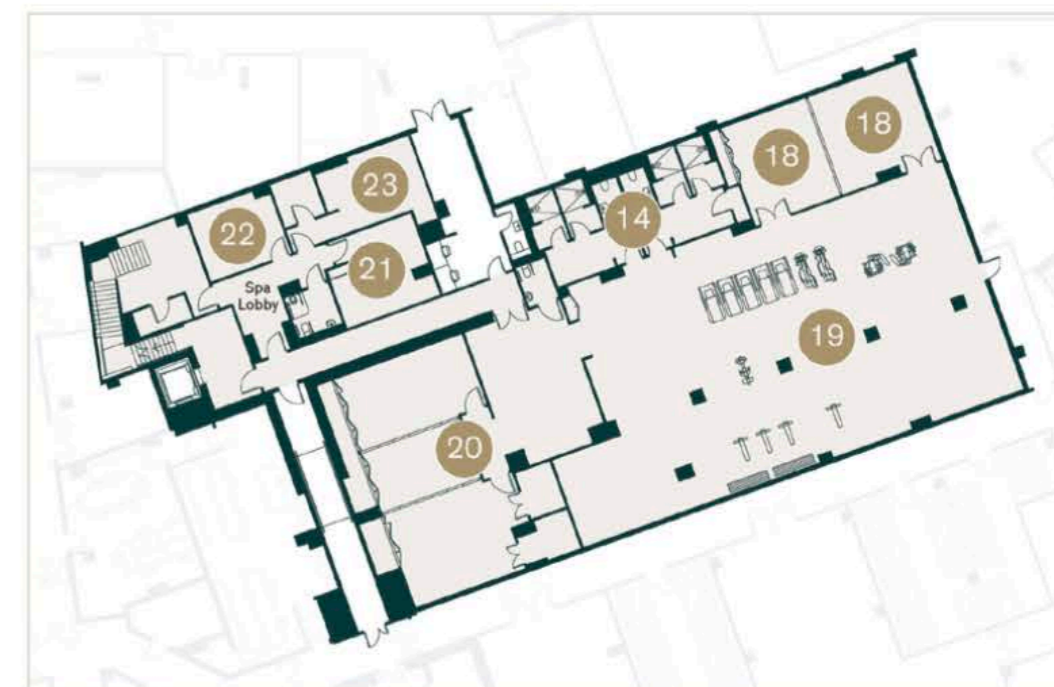


THE AMENITIES

Exquisite design  
in every detail

AMENITIES PLAN

OVER 6,400 SQ M OF AMENITIES PROVIDE OPPORTUNITIES TO RELAX, ENTERTAIN OR TO WORKOUT ANY TIME YOU WISH.



LOWER GROUND LEVEL



- 1 PRIVATE LOUNGE
- 2 WINE AND CIGAR BAR
- 3 BAR/LOUNGE AREA
- 4 WINE CELLAR
- 5 CINEMA
- 6 KTV ROOM
- 7 ENTRANCE LOBBY
- 8 CONFERENCE ROOM
- 9 LIBRARY
- 10 ART GALLERY
- 11 KIDS' CLUB
- 12 KIDS' POOL
- 13 SPA RECEPTION
- 14 CHANGING ROOMS
- 15 STEAM ROOM
- 16 DRY SAUNA
- 17 JACUZZI
- 18 YOGA STUDIO
- 19 GYM
- 20 PRIVATE STUDIOS
- 21 HAIR & NAIL SALON
- 22 RELAXATION ROOM
- 23 TREATMENT ROOM
- 24 REFUSE COLLECTION POINT
- 25 CARPARK RAMP
- 26 DROP OFF POINT



WELLBEING CREATED BY NATURE



Thames City's amenities, designed exclusively for residents, are inspired by meadow spring waters, mountain fresh air and the restorative powers of the natural world.



Natural light floods into the Wellness Centre at Thames City through multiple domed skylights that sit over the 30-metre swimming pool, while rich planting outside provides a natural and atmospheric backdrop to your relaxation.

The 24-hour concierge service will help you make the most of everything Thames City has to offer, from the fully equipped and invigorating gym to the private dining room and cinema.

The business centre is an optimised work environment, whether you're working from home, running your business, or bringing colleagues to an alternative creative space for inspiration.





**STATE-OF-THE-ART GYMNASIUM**

Residents have access to an expansive, fully equipped gymnasium, designed to motivate new personal bests, improve fitness and maintain wellbeing.

THE POOL

DIVE INTO THE CALM

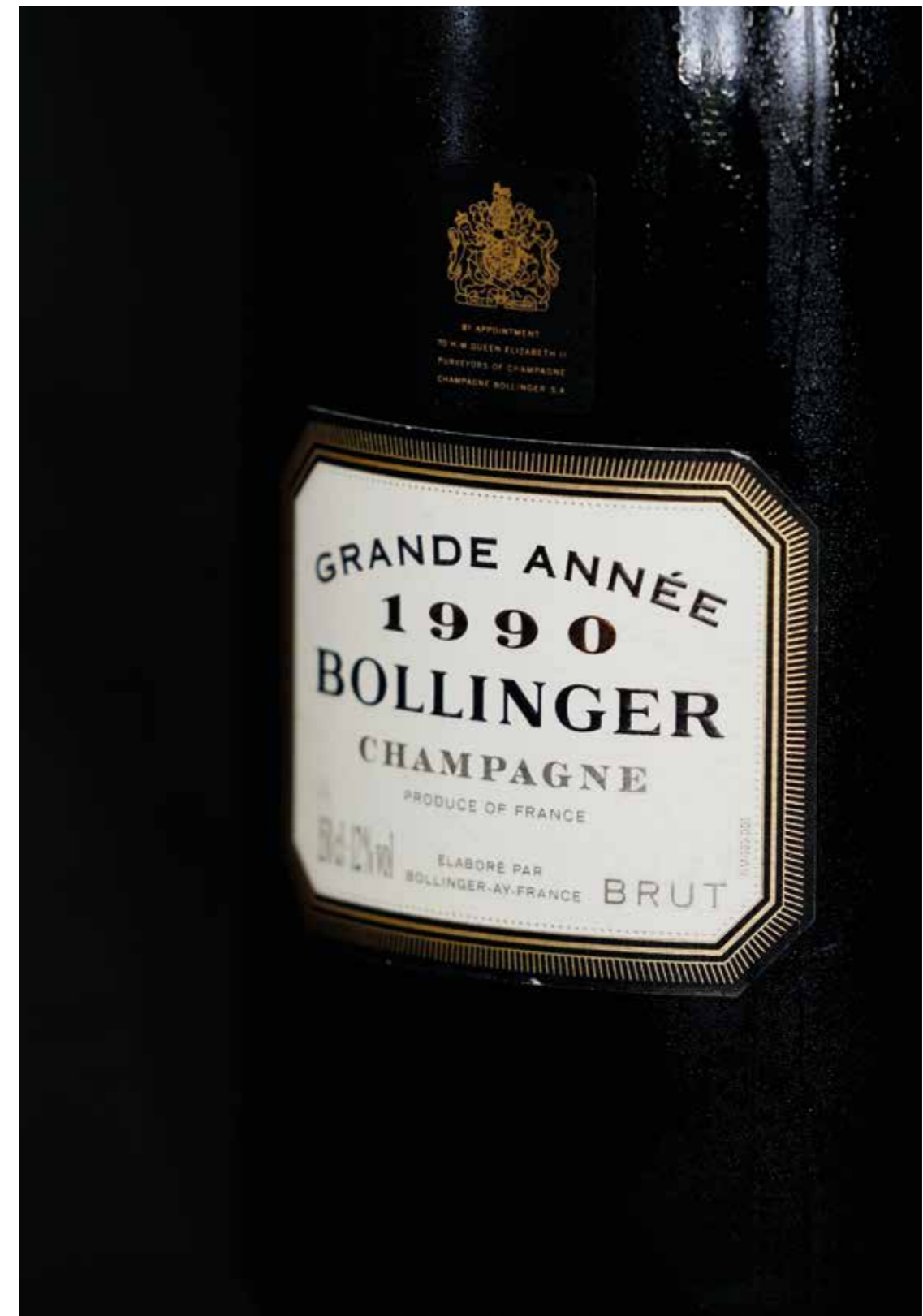
Enjoy a peaceful and invigorating swim - by sunlight or moonlight - in the 30-metre pool, exclusively for Thames City residents and their guests.





THE WINE AND CIGAR BAR IS SOMEWHERE TO SAVOUR A FINE CIGAR, TASTE A PREMIUM SELECTION OF WINES OR ENJOY A FIRST CLASS DRAM OF WHISKEY.

WINE AND CIGAR BAR



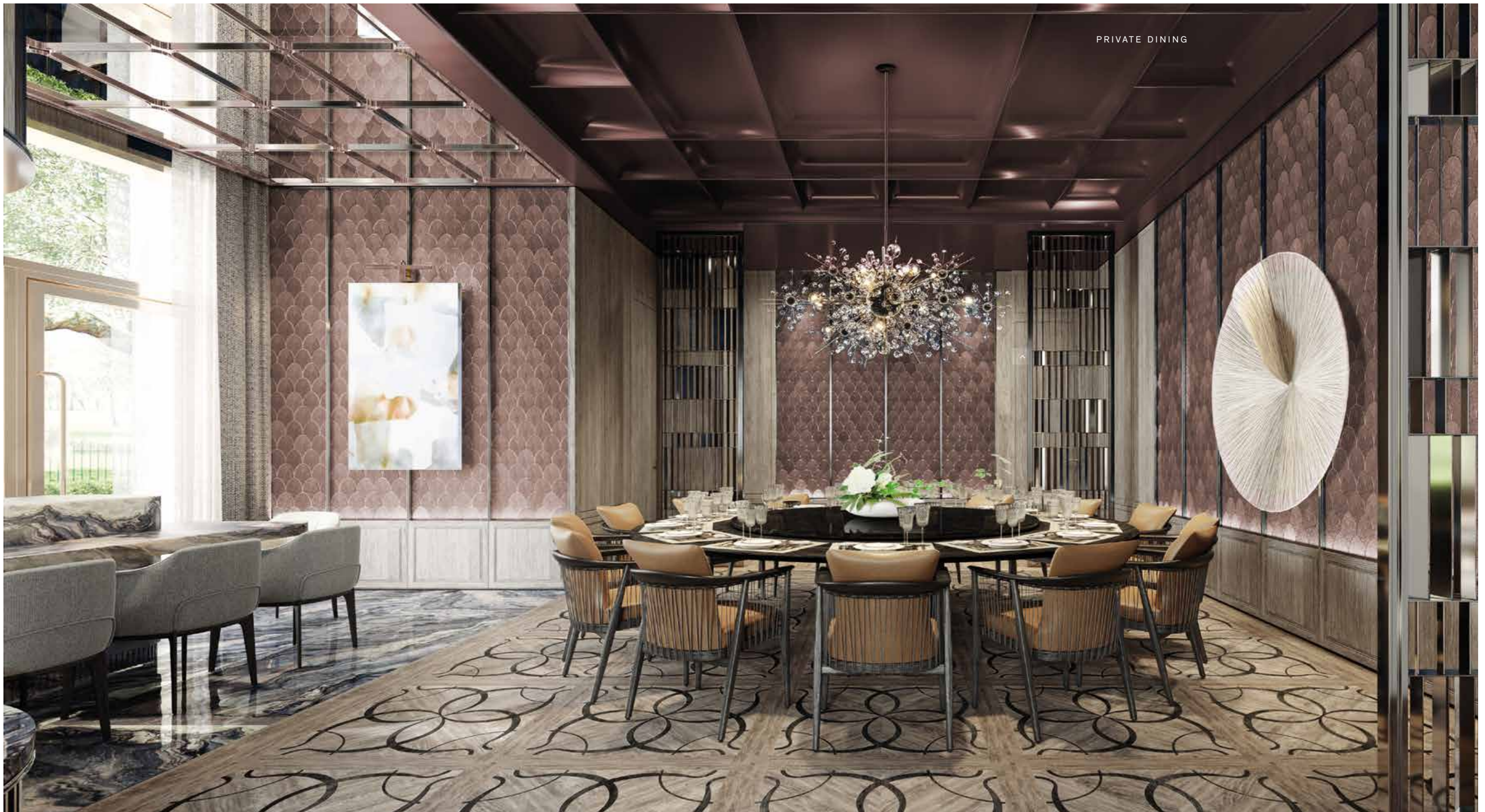
IT'S A COSY AND COMFORTING PLACE, IDEAL FOR MEETING WITH OLD FRIENDS AND NEW, WHERE YOU CAN RELAX AND SIMPLY ENJOY CONVERSATION.





INTIMATE LUXURY CINEMA

The private cinema exclusively for residents is the ultimate in luxury entertainment, just moments from your door. Whether it's an anniversary you're celebrating or a great night in with friends, we can deliver a classic cinema experience and the movie to match.



PRIVATE DINING

THE PERFECT DINING ROOM FOR A BUSINESS LUNCH  
OR A CELEBRATION WITH FAMILY AND FRIENDS.

MAKE IT AN OCCASION TO REMEMBER WITH EXQUISITE  
MENUS AND THE FINEST WINES TO CHOOSE FROM.



RESIDENTS' LOUNGE

THE RESIDENTS' LOUNGE IS INSPIRED BY THE FRESH LIGHT  
OF SPRING AND CONTEMPORARY LUXURY OF THE EAST.



THE LIBRARY IS A COMFORTING ANTIDOTE TO A HECTIC DAY, WITH MUTED COLOURS AND A RESTFUL AMBIENCE THAT ENCOURAGE YOU TO SWITCH OFF AND UNWIND.



ORNATE DETAILING USING SUMPTUOUS MATERIALS GIVES OPEN SPACES BOTH AN INTIMATE AND FLAMBOYANT TONE.



#### LOUNGE 39

Located on floor 39 of Building No.8, Lounge 39 is the perfect retreat from the heat and bustle of the city. Open air but protected, it is the place to enjoy a glass of champagne and the incredible views along and across the River Thames. Both stylish and relaxing, it is another contemporary green space, in keeping with the wide-ranging natural and healthy environments across Thames City.



# Pinnacle apartment living

CHAPTER FIVE



THE APARTMENTS

## Beautifully refined design

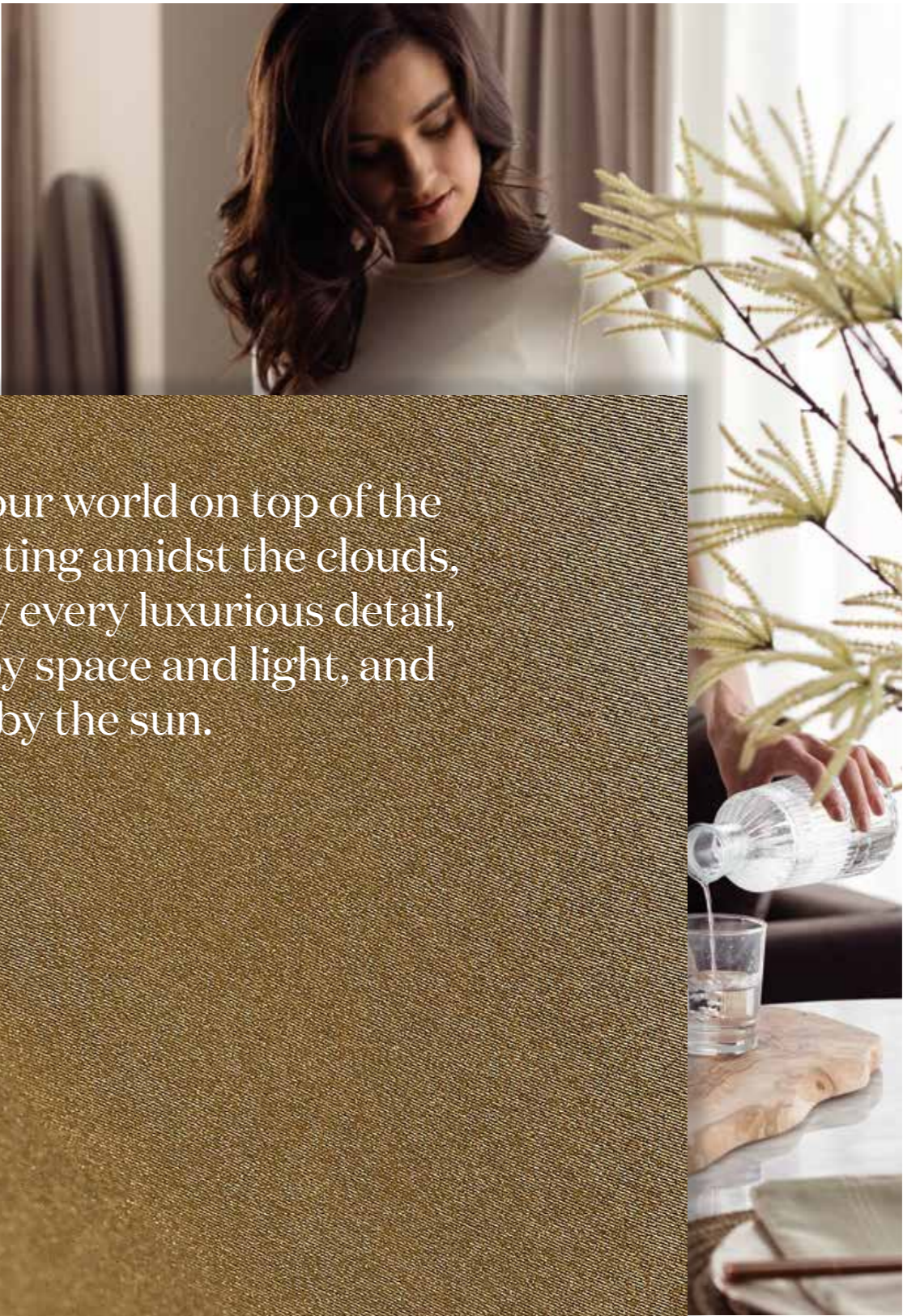
WELCOMING



A NOSTALGIC ELEGANCE PERMEATES EVERY  
DETAIL OF THE DESIGN AT THAMES CITY.

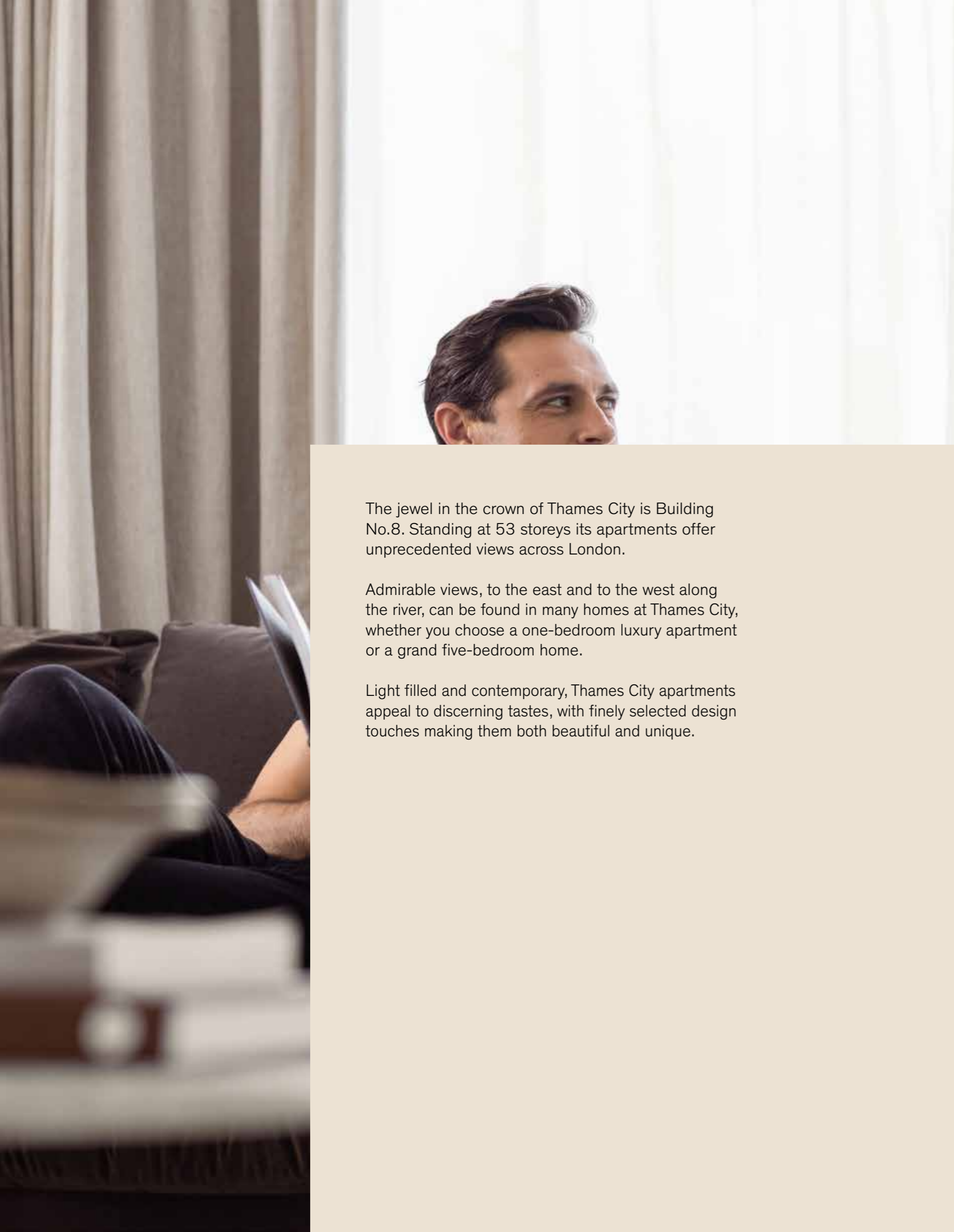


CAREFUL THOUGHT HAS BEEN GIVEN TO LIFTS AND ENTRANCE  
WAYS JUST AS MUCH AS TO APARTMENTS AND AMENITIES.



This is your world on top of the world, sitting amidst the clouds, served by every luxurious detail, calmed by space and light, and warmed by the sun.





The jewel in the crown of Thames City is Building No.8. Standing at 53 storeys its apartments offer unprecedented views across London.

Admirable views, to the east and to the west along the river, can be found in many homes at Thames City, whether you choose a one-bedroom luxury apartment or a grand five-bedroom home.

Light filled and contemporary, Thames City apartments appeal to discerning tastes, with finely selected design touches making them both beautiful and unique.



**STUNNING LIVING SPACES**

Spacious, open-plan living lets you create both intimate and statement zones, whether you're enjoying your home alone, as a family or entertaining. Stylish design details and light-filled rooms, enhanced by floor-to-ceiling windows, make these stunning environments.



Hub of style



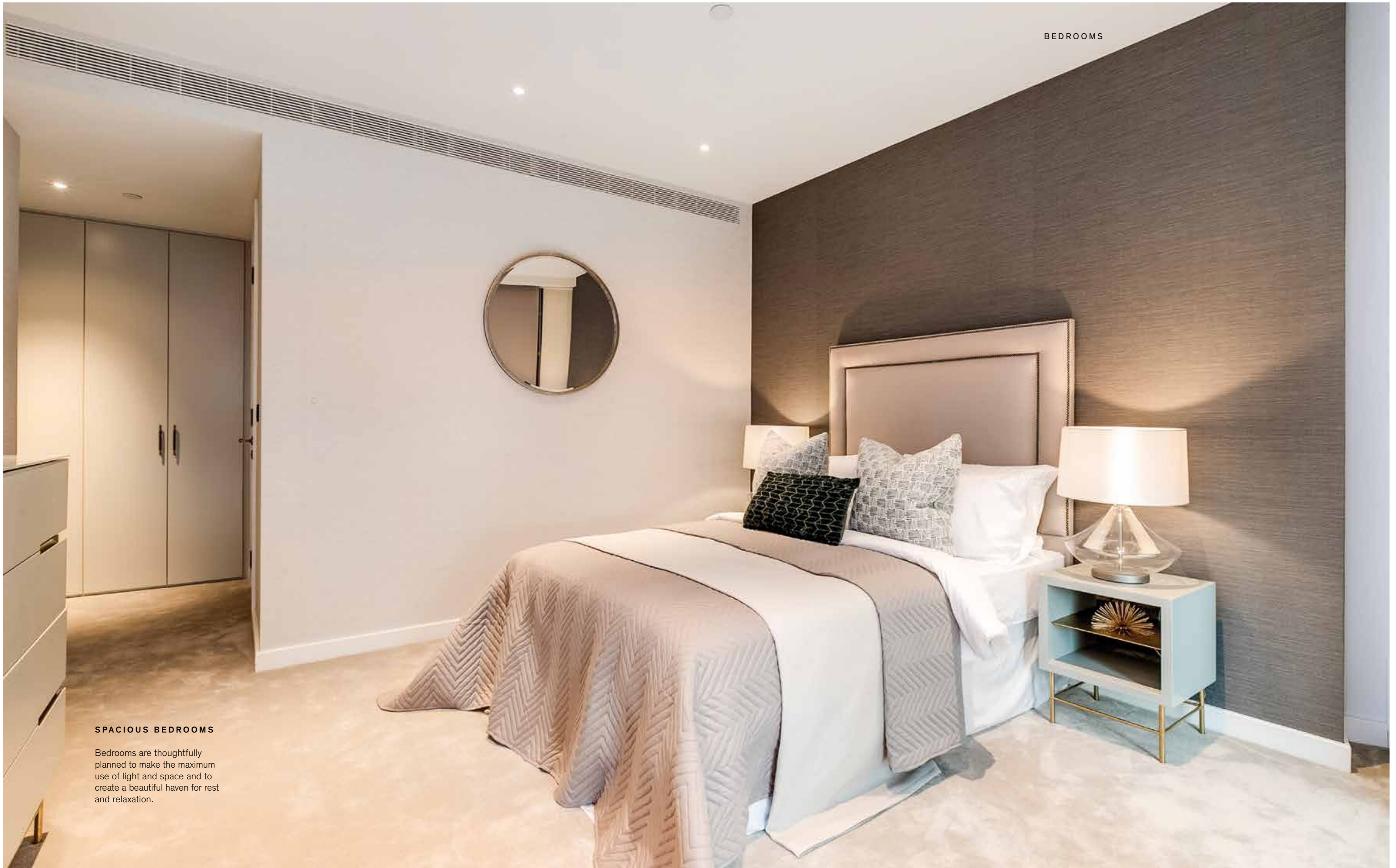
Hub of home





STREAMLINED KITCHENS

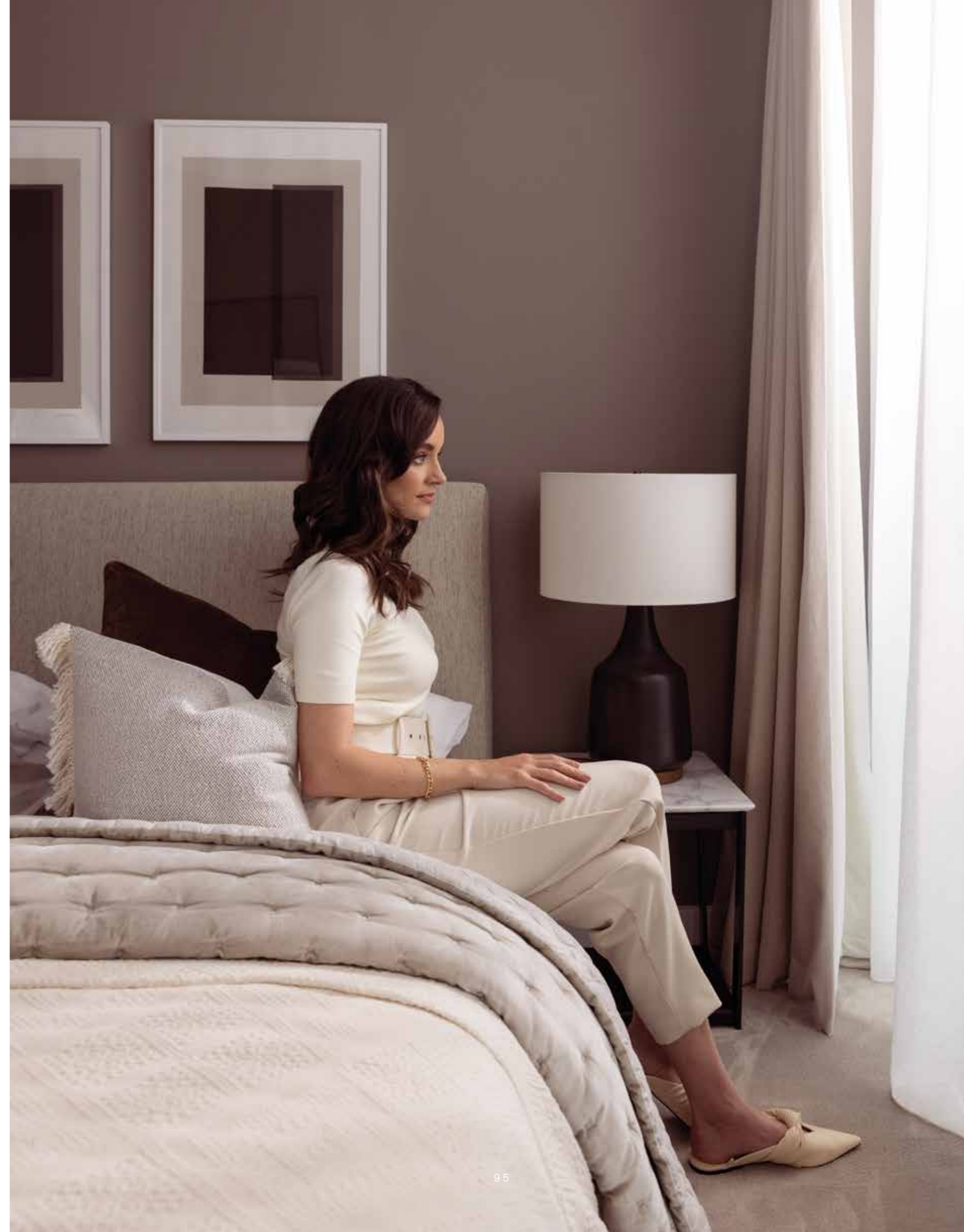
Fully-fitted and equipped contemporary kitchens make home entertaining a pleasure.



**SPACIOUS BEDROOMS**

Bedrooms are thoughtfully planned to make the maximum use of light and space and to create a beautiful haven for rest and relaxation.

BEDROOMS

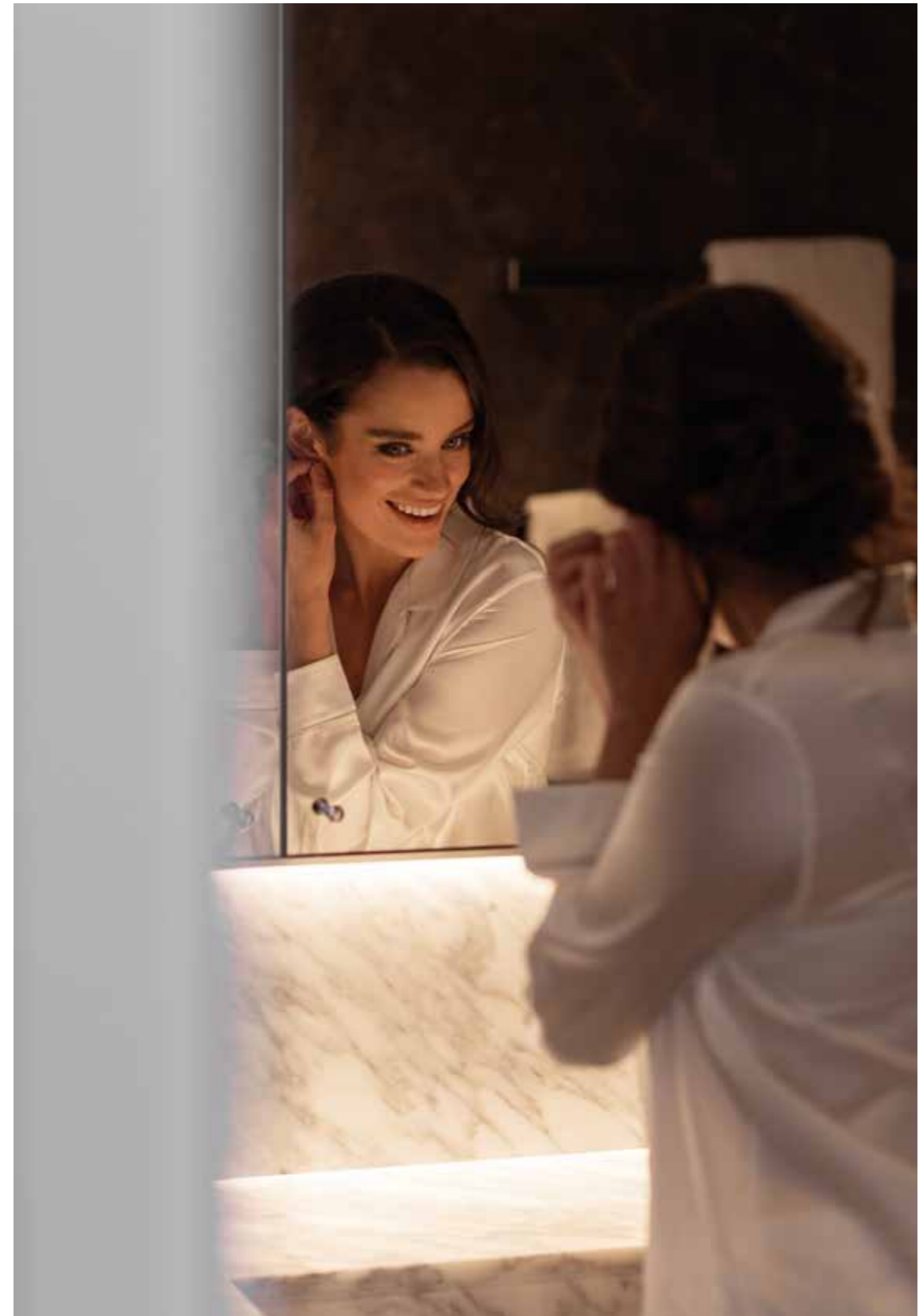




**MARBLE BATHROOMS**

Luxury marble ensuite bathrooms, family bathrooms and cloakrooms are all finished to the highest standard.

**BATHROOMS**





ULTRA HIGH SPECIFICATIONS ENSURE YOUR FULL ENJOYMENT OF EVERY ASPECT OF YOUR HOME.

**KITCHENS**

- Bespoke fully-fitted kitchens including wall and base cabinets
- Composite stone worktops
- Stainless steel splashback
- Undermounted stainless steel sink featuring single lever mixer tap
- Under cabinet lighting on wall-mounted cabinets
- Pop-up socket where applicable
- Fully integrated appliances including:
  - Miele oven
  - Miele microwave oven
  - Miele induction hob
  - Siemens or similar fridge/freezer
  - Siemens or similar dishwasher
  - Siemens or similar extractor fan
  - Wine cooler

**UTILITY CUPBOARDS**

- Siemens or similar washer/dryer
- Mechanical ventilation with heat recovery (MVHR)
- Heat interface unit/cooling interface unit with energy meter to provide domestic hot water and comfort cooling
- Underfloor heating manifold

**BATHROOMS AND ENSUITES**

- Marble finish to walls
- Marble finish to floors
- Marble-topped vanity units
- Built-in bathtub with marble trim and fascia
- Heated towel bars
- Wall-mounted Duravit WC with concealed cistern and soft close lid with dual flush plate
- White Duravit undermounted or wall-mounted wash basin where applicable
- Walk-in shower units with rain shower and wall-mounted shower set (four-piece bathrooms)
- Wall-mounted shower sets (three-piece bathrooms)
- Wall mounted mirror cabinet with under cabinet lighting
- Thermostat-controlled mixer taps throughout (Hansgrohe or similar)

**WARDROBES**

- Fully integrated wardrobes to primary and second bedrooms
- Integrated linear lighting

**WALL AND FLOOR FINISHES**

- Engineered timber floors to living and dining rooms, kitchens, and hallways
- Luxury carpet to bedrooms
- White painted finish to walls

**HEATING, COOLING AND HOT WATER**

- Comfort cooling to all habitable rooms
- Underfloor heating throughout
- Separate temperature control to lounge, kitchen and bedrooms via panel located in utility cupboard

**ELECTRICAL FITTINGS**

- Home automation systems to include heating and lighting
- Coffered ceilings with feature lighting to all living spaces
- Fully installed blind boxes pre-wired to allow for homeowner installation of automated blind system
- Adjustable mood lighting throughout
- Automated under cabinet lighting to all bathrooms
- Antique brass finish to all switches and sockets
- Access to lighting control and heating and comfort

**TELECOMMUNICATIONS**

- Antique brass finish to visible media plates
- Wiring for satellite/cable and terrestrial Freeview television
- TV outlet to living area and bedrooms
- Telephone outlet with broadband capability to living area and bedrooms
- Fibre optic infrastructure to all apartments

**SECURITY AND PEACE OF MIND**

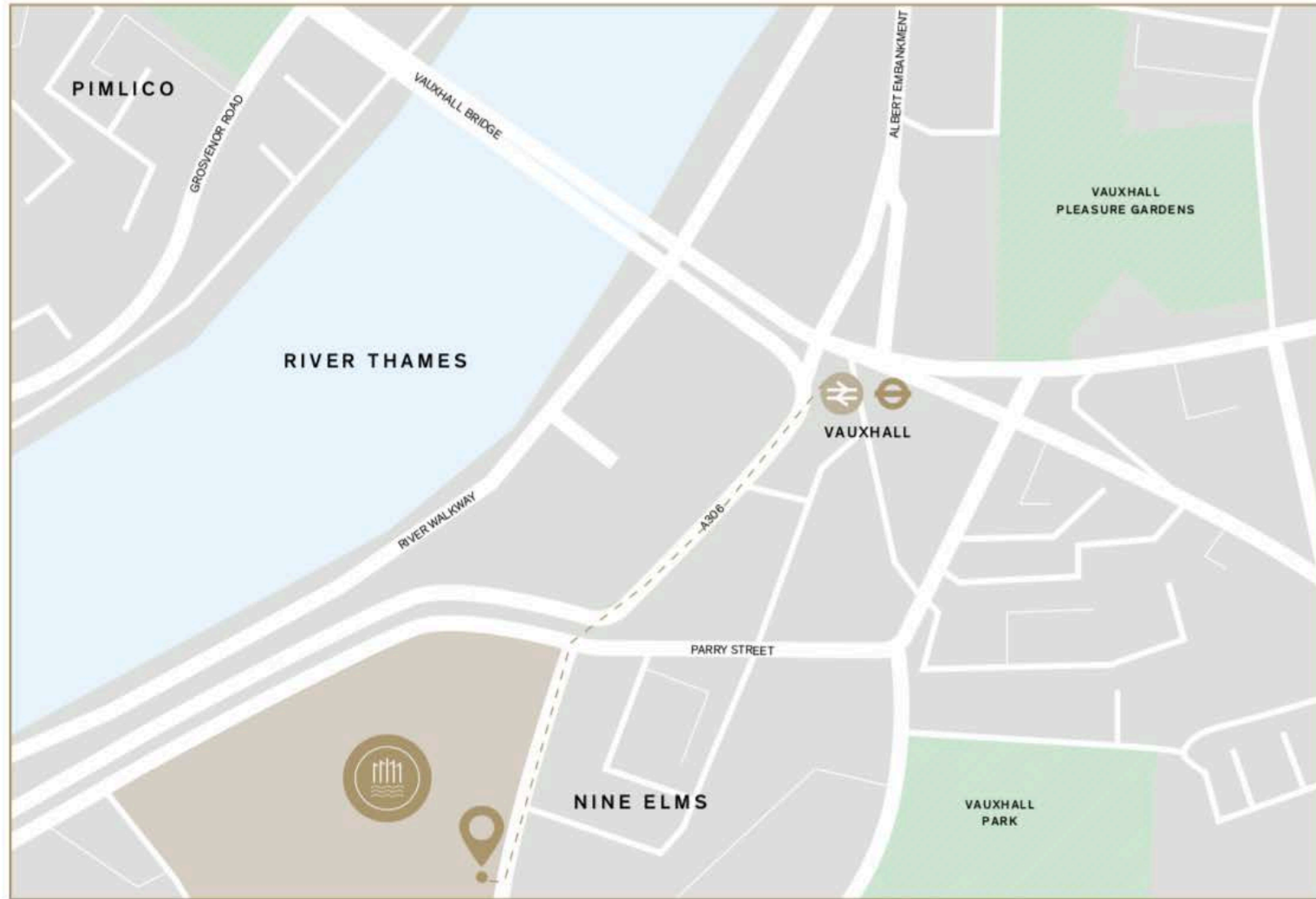
- Sprinklers throughout
- Mains supply operated smoke/heat detectors with battery back up
- Secure solid wood external doors with multi-point locking
- 24-hour concierge
- 10-year buildmark warranty

**FAÇADE SYSTEM**

- Triple glazed low iron full height glazing with internal bronze PPC
- Full height sliding door to living rooms with Juliet balcony







**CONTACT US**

+44 (0)20 3912 0137

thamescity.com

sales@thamescity.com

@thames\_city

**VISIT US**

The Gallery, Thames City  
6 Carnation Way  
London SW8 5GZ

**Misrepresentation Act**

Floor plans are not to scale and are for indicative purposes only.

Any areas, measurements or distances are approx mate. The text, images and plans are for guidance only and are not necessarily comprehensive. Any photography/computer generated images of views are provided as a guide only. As with any London development there may be ongoing planning matters and consents that could result in these views changing over time. Please speak to your solicitor to whom full details of any neighbouring schemes will be available. It should not be assumed that the property has all necessary planning, building regulation or other consents and any services, equipment or facilities have not been tested. Purchasers must satisfy themselves by inspection or otherwise. The internal layouts and the terrace pools to the apartments are subject to planning.

The particulars in this document are indicative and are prepared for the guidance only of prospective owners, tenants and occupants. They are intended to give a fair overall description of the property but do not constitute a warranty or representation or form part of an offer or contract. Any information contained herein (whether in text, plans, photographs or computer-generated images) is given in good faith and should not be relied upon as being a statement or representation of fact. Any areas, measurements or distances referred to herein are approximate only. All furnishings, wallpaper, curtains and pendant lighting are for illustrative purposes only. Descriptions of a property are inevitably subjective and the descriptions contained herein are used in good faith as an opinion and not by way of statement of fact. Thames City is a marketing name and will not necessarily form part of the approved postal address.

All CGIs within this document are indicative only and subject to change.

© September 2021

Designed and produced by Identity.  
identity-design.co.uk

A development by:

