

# CITY HOUSE SPECIFICATIONS & MATERIALS



**PRINCIPAL TOWER**

LONDON EC2

# CITY HOUSE SPECIFICATIONS & MATERIALS

## General

- Oak herringbone, porcelain and fitted carpets
- Oak timber veneer doors
- Fan coil unit comfort cooling
- Data and telephone outlet points in all principal rooms
- Stainless steel ironmongery
- LED downlighting throughout
- Cabling for a chandelier fixture in living/dining area
- 5 amp lighting sockets to living rooms and master bedrooms
- Combined washer dryer

## Kitchen

- Oak herringbone flooring
- Luxury contemporary kitchen featuring white composite stone worktops
- Miele 24" induction hob with extraction hood
- Miele oven and combination microwave oven
- Miele built-in coffee machine in 2 bed apartments
- Miele warming drawer in 2 bed apartments
- Full height, fully integrated Siemens 24" fridge/freezer
- Integrated glass-fronted wine fridge
- Siemens dishwasher
- Stainless steel undermounted sink and monobloc mixer tap
- Concealed worktop lighting
- Segregated waste storage

## Master Bedroom

- Fitted carpets
- Bespoke full height wardrobes

## Bathrooms

- Porcelain floor and wall tiling
- White enamel bath with shower over where applicable
- Marble bath surround
- Dornbracht mixers, taps and showers
- Dual flush WC with concealed cistern
- Mirror fronted cabinet with demist feature to mirrors. Interior of cabinets fitted with glass shelving and shaver point
- Mirror lighting except in small 1 bed apartments
- Underfloor heating
- Heated towel radiator
- Under counter mood light
- Feature vanity unit with marble surround
- Twin basins in 2 bed apartments

## Systems

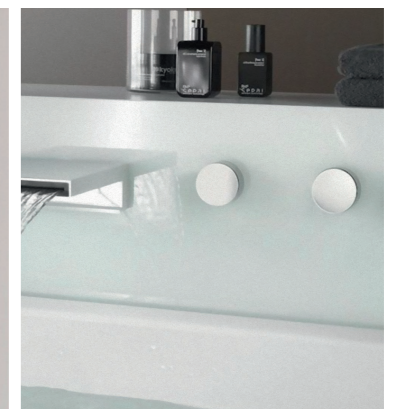
- AV cabling infrastructure for sound, IT and TV distribution
- High speed fibre optic connection infrastructure directly into each apartment for data/telephone
- Home automation system with controllable touch panels/push buttons where applicable
- A touch button master lighting controller in each principal room – push to dim
- Wiring for Sky television with outlets in principal rooms
- Mains-powered smoke alarm with battery back-up
- Residential sprinkler system

## Balconies & Terraces

- Glazed balustrade
- Composite decking

## Amenities

- Luxury swimming pool with adjacent jacuzzi
- Fully equipped residents' gym on the first floor
- Steam room and sauna
- Male and female changing rooms
- Residents' lounge/bar
- Residents' screening room
- 24-hour concierge service with CCTV
- Secure lift access
- Temperature-controlled storage facility for deliveries on ground floor
- Satellite TV reception
- Landscaping by award winning designers
- Right to park for 51 cars



DESIGNED BY  
**Foster + Partners**

JOINT VENTURE MANAGED BY

**Brookfield**

**CONCORD**  
PACIFIC



# UPPER HOUSE SPECIFICATIONS & MATERIALS



**PRINCIPAL TOWER**

LONDON EC2

# UPPER HOUSE SPECIFICATIONS & MATERIALS

## General

- Oak herringbone flooring throughout
- Oak timber veneer doors
- Underfloor heating
- Fan coil unit comfort cooling
- Data and telephone outlet points in all principal rooms
- Stainless steel ironmongery
- LED downlighting throughout
- Cabling for a chandelier fixture in living/dining area
- 5 amp lighting sockets to living rooms and master bedrooms
- Combined washer dryer
- Kitchen and bathrooms available in two colour palettes: 'Champagne' and 'Caviar'

## Kitchen

- Oak herringbone flooring
- Luxury contemporary kitchen featuring white composite stone worktops
- Wood veneered kitchen doors
- Miele 24" induction hob with extraction hood in 1 bed and small 2 bed apartments or Miele 30" induction hob and extraction hood in large 2 and 3 bed apartments
- Miele oven and combination microwave oven
- Miele 24" steam oven in large 2 and 3 bed apartments
- Miele built-in coffee machine in 2 and 3 bed apartments
- Miele warming drawer in 2 and 3 bed apartments
- Full height, fully integrated Siemens 24" fridge/freezer in 1 and 2 bed apartments or Miele 30" fridge/freezer in 3 bed apartments (except floors 39 to 42 where 3 bed apartments have a 24" fridge/freezer)
- Integrated glass-fronted wine fridge
- Siemens dishwasher
- Stainless steel undermounted sink and monobloc mixer tap
- Concealed worktop lighting
- Segregated waste storage

## Master Bedroom

- Oak herringbone flooring
- Bespoke full height wardrobes

## Bathrooms

- Marble throughout in master en-suite
- Natural stone floor tiling and porcelain wall tiles in remaining bathrooms and en-suites
- Enhanced LED spotlighting in master en-suite
- Twin basins in master en-suites in 2 and 3 bed apartments
- Dornbracht mixers, taps and shower fittings
- Dual flush WC with concealed cistern
- Mirror fronted cabinet with demist feature to mirrors. Interior of cabinets fitted with glass shelving and shaver point
- Mirror lighting except in small 1 bed apartments
- Underfloor heating
- Heated towel radiator
- Feature vanity unit with marble surround and under counter mood light

## Systems

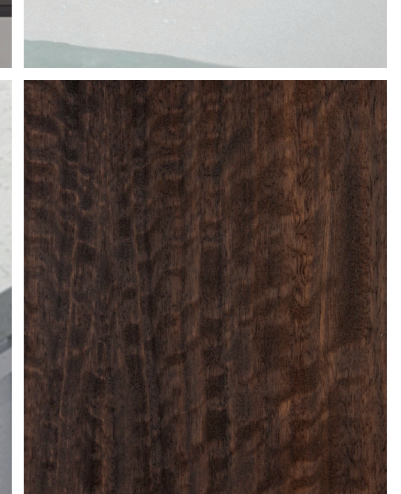
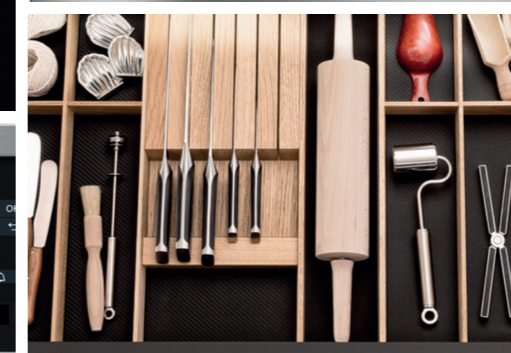
- Speakers in all en-suite bathrooms
- AV cabling infrastructure for sound, IT and TV distribution
- High speed fibre optic connection infrastructure directly into each apartment for data/telephone
- Home automation system with controllable touch panels/push buttons where applicable
- Power ready for automated blinds
- Standalone scene set lighting control in principal rooms
- Wiring for Sky television with outlets in principal rooms
- Mains-powered smoke alarm with battery back-up
- Residential sprinkler system

## Balconies & Terraces

- Glazed balustrade
- Composite decking

## Amenities

- Luxury swimming pool with adjacent jacuzzi
- Fully equipped residents' gym on the first floor
- Steam room and sauna
- Male and female changing rooms
- Residents' lounge/bar
- Residents' screening room
- 24-hour concierge service with CCTV
- Secure lift access
- Temperature-controlled storage facility for deliveries on ground floor
- Satellite TV reception
- Landscaping by award winning designers
- Right to park for 51 cars



DESIGNED BY  
**Foster + Partners**

JOINT VENTURE MANAGED BY

**Brookfield**

**CONCORD**  
PACIFIC



# PENTHOUSE SPECIFICATIONS & MATERIALS



**PRINCIPAL TOWER**

LONDON EC2

# PENTHOUSE SPECIFICATIONS & MATERIALS

## General

- Oak herringbone flooring throughout
- Oak timber veneer doors
- Underfloor heating
- Fan coil unit comfort cooling and heating system
- Data and telephone outlet points in all principal rooms
- Stainless steel ironmongery
- LED downlighting throughout
- Cabling for a chandelier fixture in living/dining area
- 5 amp lighting sockets to living rooms and master bedrooms
- Combined washer dryer
- Kitchen and bathrooms available in two colour palettes: 'Champagne' and 'Caviar'
- Dramatic open plan living and dining areas
- Full-height glazing throughout
- Roof terrace (levels 38 and 43)
- Guest cloakroom
- Separate washing machine and tumble dryer (level 48)
- Walk-in wardrobes (level 48)
- Dedicated utility room (level 48)

## Kitchen

- Oak herringbone flooring
- Luxury contemporary kitchen featuring white composite stone worktops
- Wood veneered kitchen doors
- Miele 30" induction hob and extraction hood
- Miele oven and combination microwave oven
- Miele 24" steam oven
- Miele built-in coffee machine
- Miele warming drawer
- Full height, fully integrated Miele 30" fridge/freezer
- Integrated glass-fronted wine fridge
- Siemens dishwasher
- Stainless steel undermounted sink and monobloc mixer tap
- Concealed worktop lighting
- Segregated waste storage

## Master Bedroom

- Oak herringbone flooring
- Bespoke full height wardrobes

## Bathrooms

- Natural stone floor tiling and wall tiles
- Marble throughout in all bathrooms
- Enhanced LED spotlighting in master en-suite
- Steam shower and stand-alone bath in master en-suite (level 48)
- Twin basins in master en-suites except apartment 43.01
- Dornbracht mixers, taps and showers
- Dual flush WC with concealed cistern
- Mirror fronted cabinet with demist feature to mirrors. Interior of cabinets fitted with glass shelving and shaver point
- Mirror lighting
- Underfloor heating
- Heated towel radiator
- Feature vanity unit with marble surround and under counter mood light

## Systems

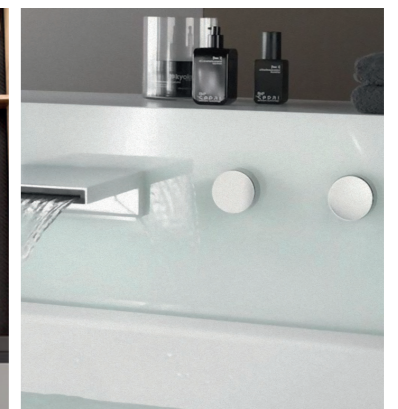
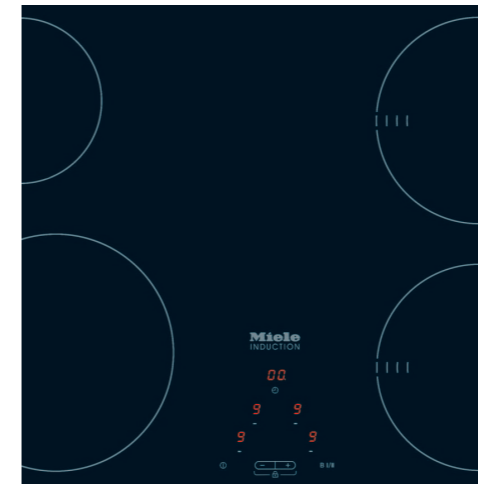
- TV enabled in master bathroom
- Speaker cabling in all principal rooms
- Power and lighting controls for future provision of cove lighting
- Speakers in all en-suite bathrooms
- AV cabling infrastructure for sound, IT and TV distribution
- High speed fibre optic connection infrastructure directly into each apartment for data/telephone
- Home automation system with controllable touch panels/push buttons where applicable
- Power ready for automated blinds
- Standalone scene set lighting control in principal rooms
- Wiring for Sky television with outlets in each room
- Mains-powered smoke alarm with battery back-up
- Residential sprinkler system

## Balconies & Terraces

- Glazed balustrade
- Composite decking

## Amenities

- Luxury swimming pool with adjacent jacuzzi
- Fully equipped residents' gym on the first floor
- Steam room and sauna
- Male and female changing rooms
- Residents' lounge/bar
- Residents' screening room
- 24-hour concierge service with CCTV
- Secure lift access
- Temperature-controlled storage facility for deliveries on ground floor
- Satellite TV reception
- Landscaping by award winning designers
- Right to park for 51 cars





DESIGNED BY  
**Foster + Partners**

JOINT VENTURE MANAGED BY

**Brookfield**

**CONCORD**  
PACIFIC

